

Hints and Answer Key

Clean Your Hands Day 2022

Puzzle #1: Perspective – What can you see?

Hint

Having trouble seeing the image?

Imagine you are standing in a movie theatre and are on the far right side of the theatre, standing very, very close to the screen.

You would be looking at the images on the screen at a very sharp angle, and it would be difficult to watch the movie, as the image would be very distorted.

What if you applied the same principle here?

As investigators and first line defence for stopping infectious diseases, we need to look at things differently.

In real life we would do things like:

- Look for signs and symptoms of illness.
- Look at the number of ill cases in an area.,
- Identify where they are located physically from each other.
- Ask if there is anything connecting them together, etc.

Essentially look at all angles.

Answer

Did you look at this from a different angle?

If you did, you would have identified the Infection Prevention and Control word of the day...GERMS



Hints and Answer Key

Clean Your Hands Day 2022

Puzzle #2: Hidden objects

Answer



Hints and Answer Key

Clean Your Hands Day 2022

Puzzle #3: Flashcard memory game

Hint

Refer to the AHS Hand Hygiene [Policy](#) and [Procedure](#).

Answer

| | |
|--|------------------------|
| Before contact with a patient or patient's environment | Moment 1 |
| Before a clean or aseptic procedure | Moment 2 |
| After exposure or risk of exposure to blood and/or body fluids | Moment 3 |
| After contact with a patient or patient's environment | Moment 4 |
| To be used before and after touching objects or equipment in the immediate area around the patient | Alcohol-based Hand Rub |
| To be used when hands are visibly soiled | Plain Soap and Water |

Puzzle #4: Riddle

Hint

Do not be confused.
The answer is easy.
They go on your hands.

Answer

GLOVES

Hints and Answer Key

Clean Your Hands Day 2022

Puzzle #5: Enigma at Enigma Hospital

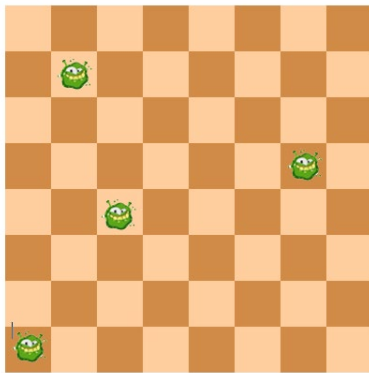
Hint #1

There are 8 rows and columns, and 8 patients you need to place, that means each row and column will have 1 patient each.

Try going down a row and column, placing one patient at a time, the tricky party is making sure they do not align diagonally.

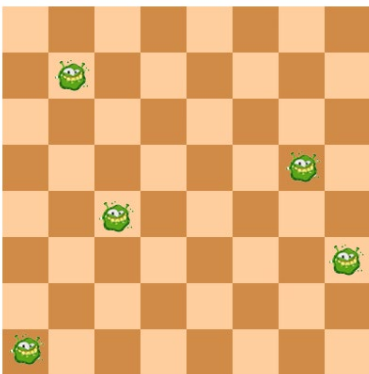
Hint #2

One more patient has been placed for you.



Hint #3

Now 5 have been placed for you.
Can you place the last 3?



Hints and Answer Key

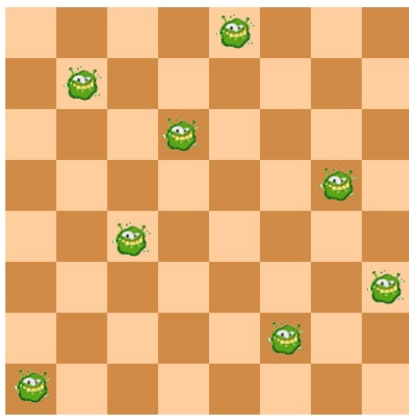
Clean Your Hands Day 2022

Answer

This is the solution for the moderate puzzle.

There are actually multiple solutions for the hard version of the puzzle if you want to try a tougher challenge.

There are 12 possible solutions to the hard puzzle, try the hard version to see if you can find another one.



Puzzle #6: Cryptogram

Hint

Visit this IPC Resource [webpage](#) and find a poster for hints.

Answer

| A | B | C | D | E | F | G | H | I | J | K | L | M | N | O | P | Q | R | S | T | U | V | W | X | Y | Z |
|----|---|---|----|---------------|---|----|---------------|----|---|---|---|---|---|--------------|---|---|---|---------------|----|----|----|---|---|----|---|
| 26 | | 5 | 24 | ²⁰ | | 21 | ²³ | 13 | | | | | 4 | ⁶ | 2 | | 7 | ¹² | 25 | 11 | 14 | 8 | | 18 | |

R E S P I R A T O R Y H Y G I E N E : C O V E R
7 20 12 2 13 7 26 25 6 7 18 23 18 21 13 20 4 20 5 6 14 20 7

Y O U R C O U G H ; W A S H Y O U R H A N D S
18 6 11 7 5 6 11 21 23 8 26 12 23 18 6 11 7 23 26 4 24 12

RESPIRATORY HYGIENE: COVER YOUR COUGH; WASH YOUR HANDS

Hints and Answer Key

Clean Your Hands Day 2022

References

AHS (2021). Hand Hygiene [Policy](#) and [Procedure](#). Alberta

AHS Infection Prevention and Control (2022). [Glove use and selection](#). Alberta

AHS Infection Prevention and Control (2022). [Routine practices](#). Alberta

Images

Inspector image downloaded March 28, 2022 from Vectorstock.com

City image downloaded March 28, 2022 from Wikimedia commons photographs
[Category: Photographs - Wikimedia Commons](#)

Cards image downloaded March 28, 2022 from dreamstime.com

Leprechaun, pot of gold, gloves and clapping hands images downloaded March 29, 2022 from favpng.com

Credits

AHS Infection Prevention and Control Events Working Group.