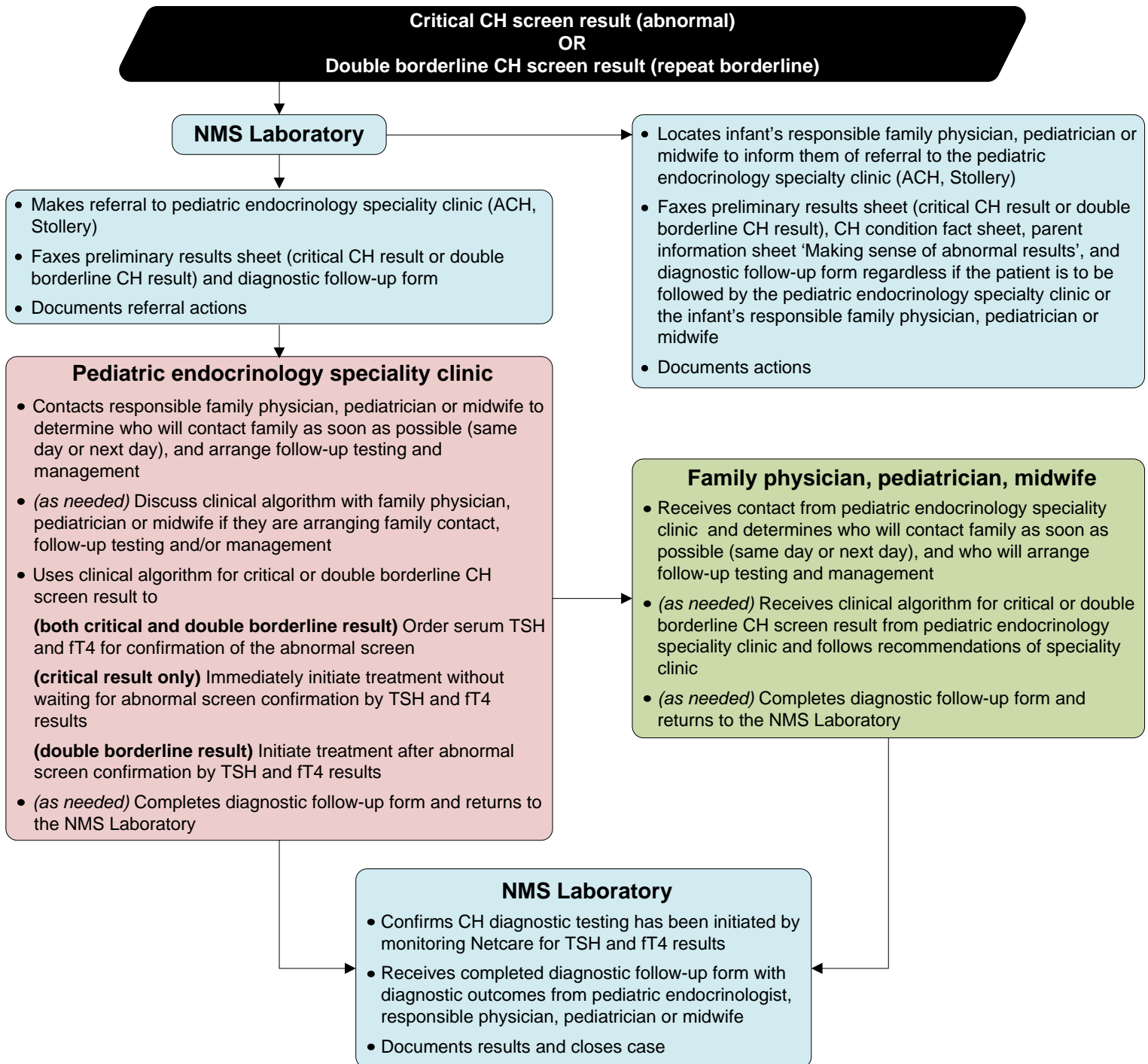


## Referral Pathway for Congenital Hypothyroidism Abnormal Screen Result



### Definitions:

**Congenital hypothyroidism (CH)** is the state of inadequate thyroid hormone production in the newborn. A confirmed CH abnormal screen is based on laboratory result values of thyroid stimulating hormone (TSH) and free thyroxine (fT4), family history and clinical assessment.

A **critical CH screen result (abnormal CH screen result)** means a newborn blood spot screen with TSH results >50mIU/L.

A **double borderline CH screen result (repeat borderline screen result)** means an initial newborn blood spot screen and repeat newborn blood spot screen, both with TSH results of 25-50mIU/L.

**Early screening, detection and treatment – every infant, every time**

For more information about the NMS Program visit [www.ahs.ca/newbornscreening](http://www.ahs.ca/newbornscreening)  
January 2018 NMS Program CH Referral V2

