

# **Alberta Newborn Screening Program Quarterly Performance Report 2025-2026**



## Table of Contents

**2025-2026**

**[ANSP QPR Q1 April – June](#)**



**Alberta Newborn Screening Program:  
2025-2026 Q1 Quarterly Performance Report  
April 1, 2025 – June 30, 2025**

October 15, 2025

## Alberta Newborn Screening Program

This report has been prepared by the Alberta Newborn Screening Program.

### Contact

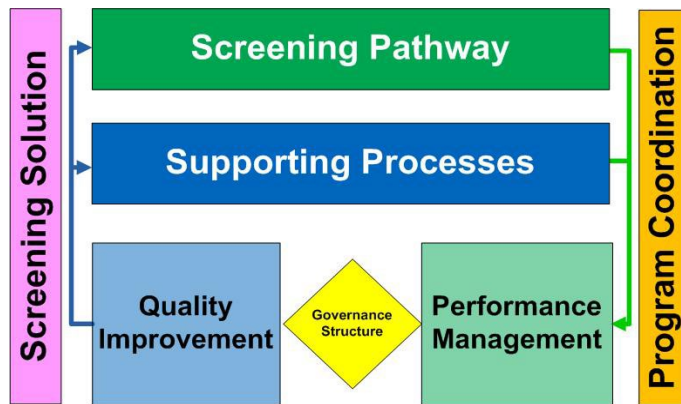
For more information, please contact:

Grace Johner  
Manager, Newborn Screening Programs  
Primary Care Alberta  
Email: [newbornscreening@primarycarealberta.ca](mailto:newbornscreening@primarycarealberta.ca)



# Quality management

Alberta Newborn Screening Program (ANSP) quality is managed through a quality management framework (QMF), see Figure A. The QMF is actively used to support newborn blood spot screening service delivery, manage program performance, and improve screening services and supports. The QMF encompasses program coordination and a screening solution to fully manage quality within the ANSP as a population-based screening program.



**Figure A. Alberta Newborn Screening Program quality management framework**

ANSP performance is measured, reported and managed to prevent or reduce negative impacts on patient safety and to facilitate continuous improvement to ensure the screening of every infant, every time.

## Quarterly performance report scope

Data presented is compiled for reporting based on Alberta Newborn Screening Program (ANSP) Application reports. Data for each quarter is retrieved on the last day of the following quarter, for example data for quarter 2, July 1- September 30, is retrieved on December 31. Data were excluded for all samples analyzed and reported by the Alberta Newborn Screening Laboratory for infants born outside of Alberta and whose samples were collected outside of Alberta. Percentage rates to the second decimal point are presented to illustrate incremental changes especially above the 90th percentile. For more information, including previous years' quarterly performance reports and annual reports, contact [newbornscreening@primarycarealberta.ca](mailto:newbornscreening@primarycarealberta.ca).



## Quarterly performance report definitions

- **AHS zone not assigned** means infants not assigned within the ANSP Application to a zone of birth (e.g., infants born outside Alberta but screened within Alberta), zone of collection (e.g., infants whose zone of collection is missing on the blood spot card) or AHS zone of responsibility (e.g., infants under the responsibility of First Nations [FN] communities). Details on why an AHS zone was not assigned to an infant vary with specific performance measures and are available upon request.
- **Low birth weight** means an infant weighs less than 2000 grams at birth.
- **Received samples** means newborn blood spot samples received by the Alberta Newborn Screening Lab as reported to the ANSP Application.
- **Registered infants** means infants born in Alberta during the reporting period and registered through the assignment of an Alberta Unique Lifetime Identifier (ULI) using the 'add newborn' function in Person Directory (PD).
- **Registered screened infants** means registered infants who had an initial screen within the ANSP during the reporting period.
- **Screened infants** means all infants that received an initial newborn blood spot screen within the ANSP including registered screened infants and infants born outside of Alberta who were screened in Alberta.
- **Unable to determine** means the time of birth information required to measure whether a specific performance measure has been met or not met is not available from the blood spot card.
- **Zone of birth** means the AHS zone mapped within the ANSP Application to the birth facility.
- **Zone of collection** means the AHS zone of collection recorded on the blood spot card.
- **Zone of residence** means the AHS zone mapped within the ANSP Application to the infant's PD mailing address postal code.
- **Zone of responsibility** means the AHS zone within the ANSP Application that equals the zone of residence unless there is a manual transfer to an alternate zone of responsibility (e.g., follow-up actions determined an infant had moved). In prior years, the assignment of zone of responsibility was equal to zone of birth but this was changed for 2012-2013 to better reflect population health reporting practices based on the location of official residence.



## Quarterly performance comparisons

ANSP quarterly performance data for comparison are presented in Table 1 for the current quarter (April 1 to June 30) and previous four quarters. Improvements in performance over the previous quarter are shown in **bold**.

Note: For comparison, contact [newbornscreening@primarycarealberta.ca](mailto:newbornscreening@primarycarealberta.ca) to see previous years' quarterly performance reports and annual reports



## Alberta Newborn Screening Program

**Table 1: ANSP performance measures for the reporting period and previous four quarters**

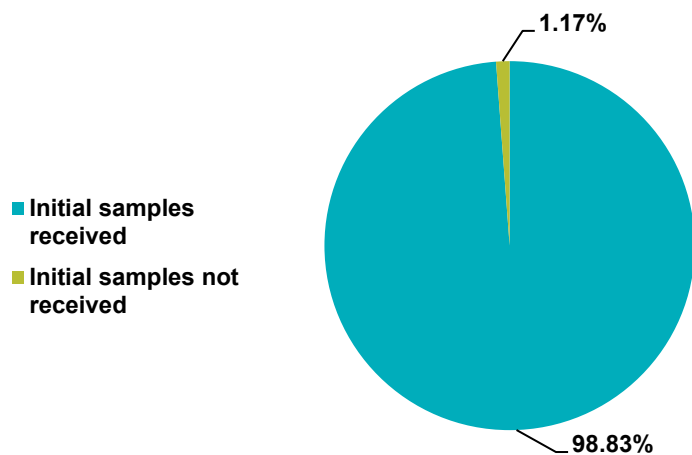
QPR figure & ANSP performance measure*	Q1 2024-2025	Q2 2024-2025	Q3 2024-2025	Q4 2024-2025	Q1 2025-2026
<b>Figure 1: Program participation rate and non-participation rationale</b> Percentage of infants born and registered as newborns in Alberta that received an initial newborn blood spot screen. Reported by zone of responsibility	99.22%	98.82%	99.00%	98.88%	98.83%
<b>Figure 2: Inadequate samples and inadequate samples rationale</b> Percentage of samples received by Alberta Newborn Screening Laboratory deemed to be inadequate as determined by the lab. Reported by zone of collection	1.81%	1.49%	1.53%	1.37%	1.27%
<b>Figure 3: Birth registration within 24 hours of age</b> Percentage of infants born and registered as newborns in Alberta within 24 hours of age. Reported by zone of birth	98.84%	98.53%	98.80%	98.44%	98.62%
<b>Figure 4: Initial sample collection between 24 and 72 hours of age</b> Percentage of infants registered as newborns in Alberta with an initial sample collected between 24 and 72 hours of age. Reported by zone of responsibility	98.04%	98.16%	98.53%	98.80%	98.60%
<b>Figure 5: Sample receipt by Alberta Newborn Screening Laboratory within 72 hours of sample collection</b> Percentage of samples received by the Alberta Newborn Screening Laboratory within 72 hours of collection. Reported by zone of responsibility	97.52%	85.28%	82.39%	85.56%	86.83%
<b>Figure 6: Results reported by Alberta Newborn Screening Laboratory within 96 hours of lab receipt (excluding cystic fibrosis)</b> Percentage of received samples with screen results reported by the Alberta Newborn Screening Laboratory within 96 hours of lab receipt (note: does not include cystic fibrosis result reporting). All screen results reported by Alberta Newborn Screening Laboratory	76.88%	80.60%	88.35%	90.20%	85.07%
<b>Figure 7: Initial screen results reported by Alberta Newborn Screening Laboratory within 10 days of age (excluding cystic fibrosis)</b> Percentage of infants born and registered as newborns in Alberta that received an initial newborn blood spot screen and results reported by the Alberta Newborn Screening Laboratory within 10 days of age (note: does not include cystic fibrosis result reporting). Reported by zone of responsibility	98.64%	96.83%	98.54%	98.71%	98.15%
<b>Figure 8: Repeat sample collection within 96 hours of notification of reported inadequate results</b> Percentage of repeat samples collected within 96 hours of notification of reported inadequate results. Reported by zone of responsibility	77.78%	82.11%	81.91%	81.29%	85.12%
<b>Figure 9: Repeat sample collection within 96 hours of notification of reported borderline results (excluding tyrosine)</b> Percentage of repeat samples collected within 96 hours of notification of reported borderline results (note: does not include increased tyrosine result). Reported by zone of responsibility	85.56%	90.00%	89.68%	91.89%	91.59%
<b>Figure 10: Samples collected between 21 days and 28 days of age for infants with low birth weight</b> Percentage of samples collected for low birth weight infants within 504 hours and 672 hours of birth	96.17%	97.79%	96.59%	97.81%	98.08%
<b>Source:</b> ANSP Application reports <b>Date:</b> Date retrieved from ANSP Application	October 1, 2024	January 2, 2025	March 31, 2025	June 30, 2025	October 1, 2025

\*excludes all samples analyzed & reported by the Alberta Newborn Screening Laboratory for infants whose samples were collected outside of Alberta



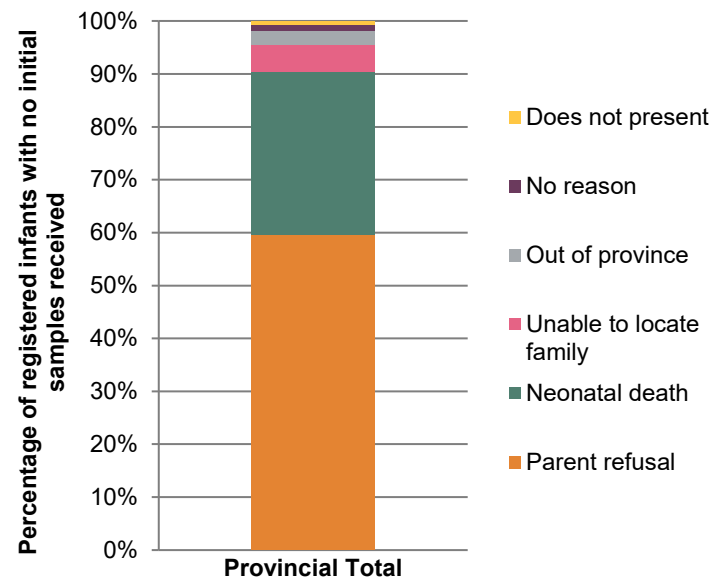
**Figure 1: Program participation rate and non-participation rationale<sup>1</sup>**

**Participation, provincial total**



Initial Samples	Provincial Total	Provincial Total %
Initial samples received	13322	98.83%
Initial samples not received	158	1.17%
<b>Grand Total</b>	<b>13480</b>	<b>100.00%</b>

**Non-participation rationale, provincial total**



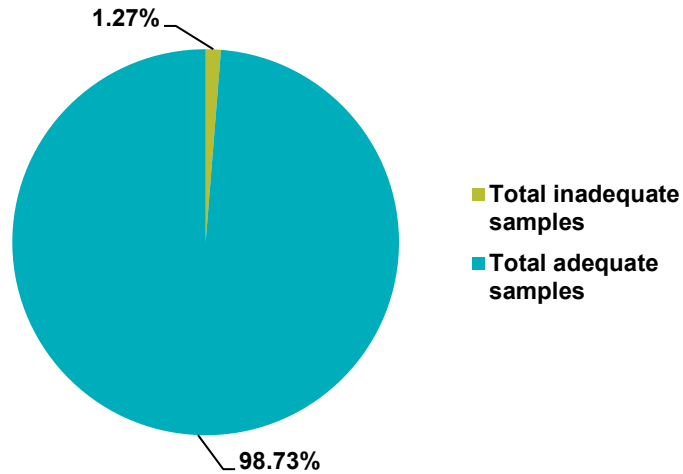
Non-participation rationale	Provincial Total	Provincial Total %
Parent refusal	94	59.49%
Neonatal death	49	31.01%
Unable to locate family	8	5.06%
Out of province	4	2.53%
No reason	2	1.27%
Does not present	1	0.63%
<b>Grand Total</b>	<b>158</b>	<b>100.00%</b>

<sup>1</sup> Data retrieved October 1, 2025 from ANSP Application Report 1 & ANSP Application statistics. Data are for all registered infants by zone of responsibility.ma



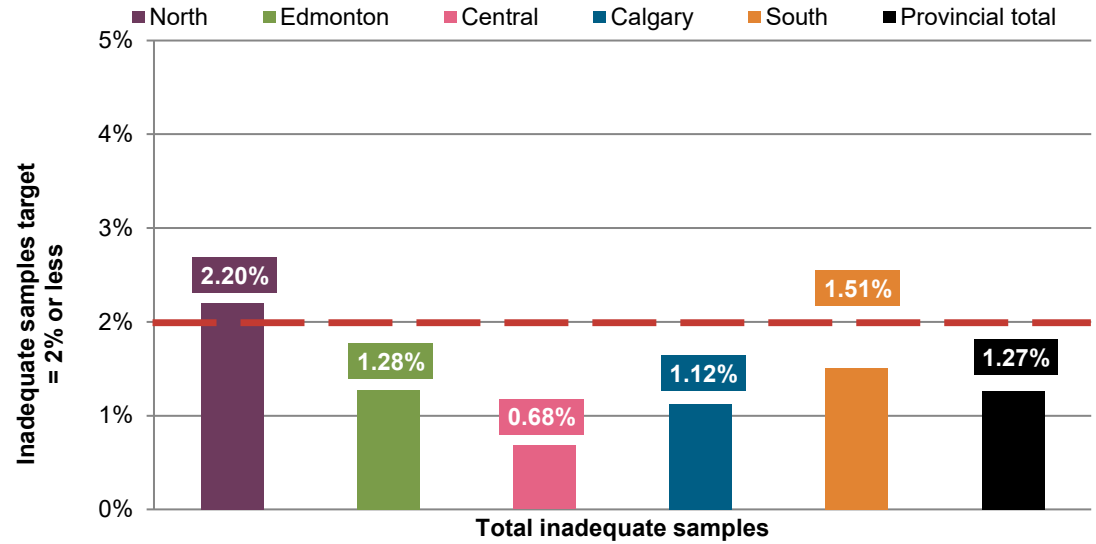
**Figure 2: Inadequate samples and inadequate samples rationale<sup>2</sup>**

Inadequate and adequate samples, provincial total



Samples	Provincial total
Total inadequate samples	177
Total adequate samples	13805
<b>Grand Total</b>	<b>13982</b>

Inadequate samples, provincial and zone totals

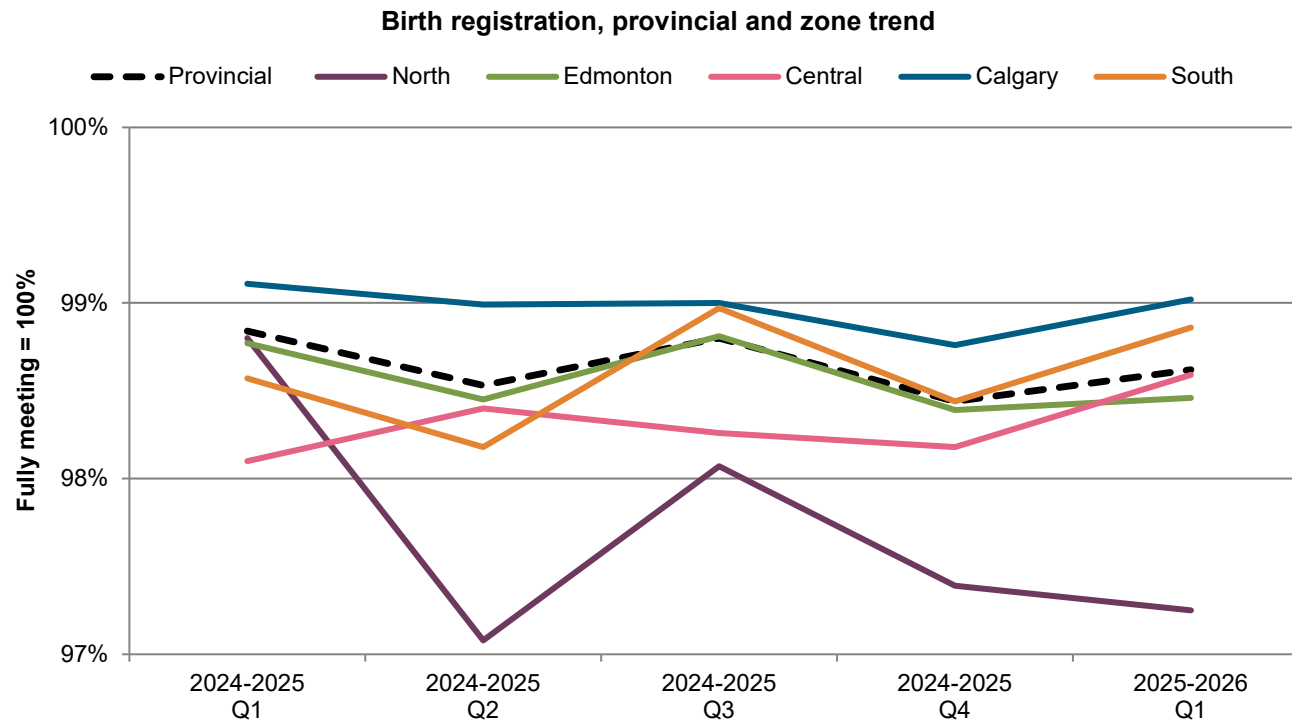


Inadequate samples rationale	North	Edmonton	Central	Calgary	South	AHS Zone not	Provincial Total
<24 hours	8	17	0	16	4	0	45
Assay failed	0	1	0	1	0	0	2
Blood clotted and layered	0	2	1	10	0	0	13
Date or time of collection illegible or not indicated	0	4	1	8	0	0	13
Query patient identification	0	3	0	0	0	0	3
Requisition expired	1	1	0	0	0	0	2
Sample contaminated	5	5	0	2	1	0	13
Sample insufficient (NSQ)	4	15	2	8	5	0	34
Sample stability exceeded	1	0	0	0	0	0	1
Specimen abraded	7	19	3	17	5	0	51
<b>Grand Total</b>	<b>26</b>	<b>67</b>	<b>7</b>	<b>62</b>	<b>15</b>	<b>0</b>	<b>177</b>

<sup>2</sup> Data retrieved October 1, 2025 from ANSP Application Report 3. Data are for all received samples by zone of collection. Details on AHS zone not assigned available upon request.



**Figure 3: Birth registration within 24 hours of age<sup>3</sup>**

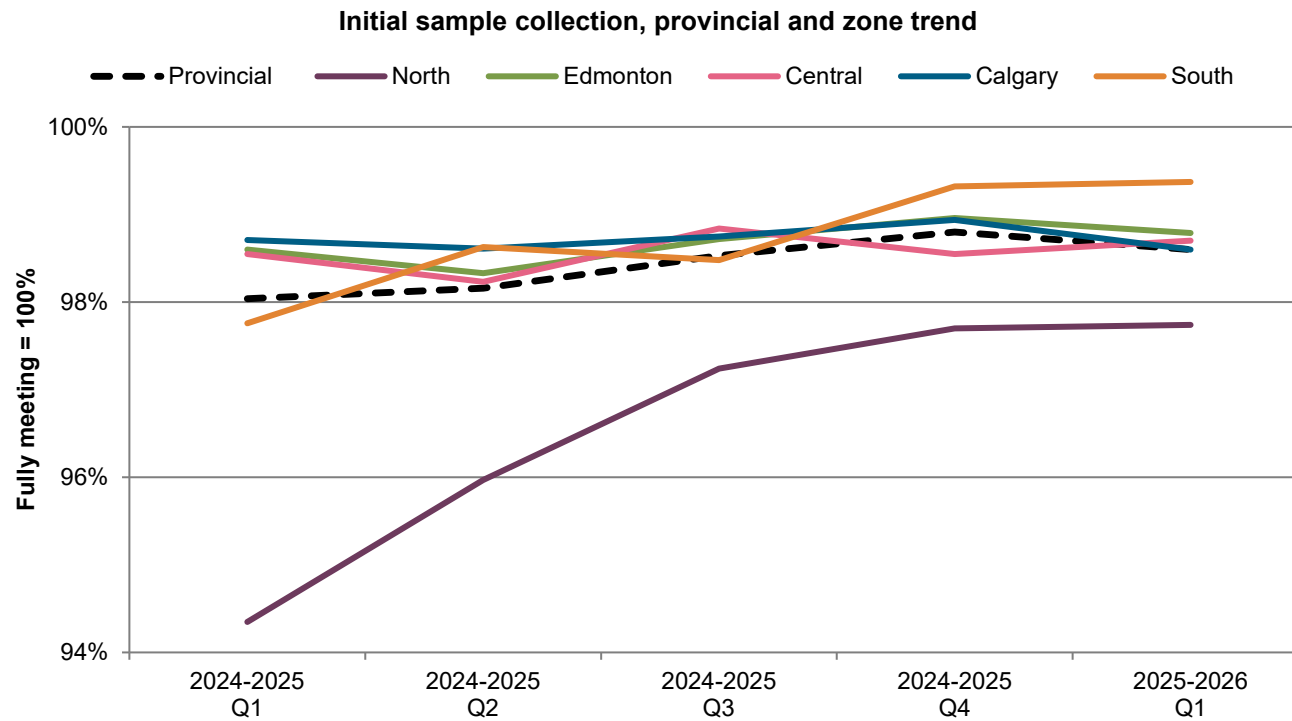


Q1 2025-2026	North	Edmonton	Central	Calgary	South	Provincial total
Meeting standard (%)	<b>97.25%</b>	<b>98.46%</b>	<b>98.59%</b>	<b>99.02%</b>	<b>98.86%</b>	<b>98.62%</b>
Meeting standard (n)	1097	4993	978	5276	950	13294
Not meeting standard (n)	2	3	4	1	1	11
Unable to determine (n)	29	75	10	51	10	175
<b>Grand Total</b>	<b>1128</b>	<b>5071</b>	<b>992</b>	<b>5328</b>	<b>961</b>	<b>13480</b>

<sup>3</sup> Data retrieved October 1, 2025 from ANSP Application Report 8, Section A. Data are for all registered infants by zone of birth.



**Figure 4: Initial sample collection between 24 and 72 hours of age<sup>4</sup>**

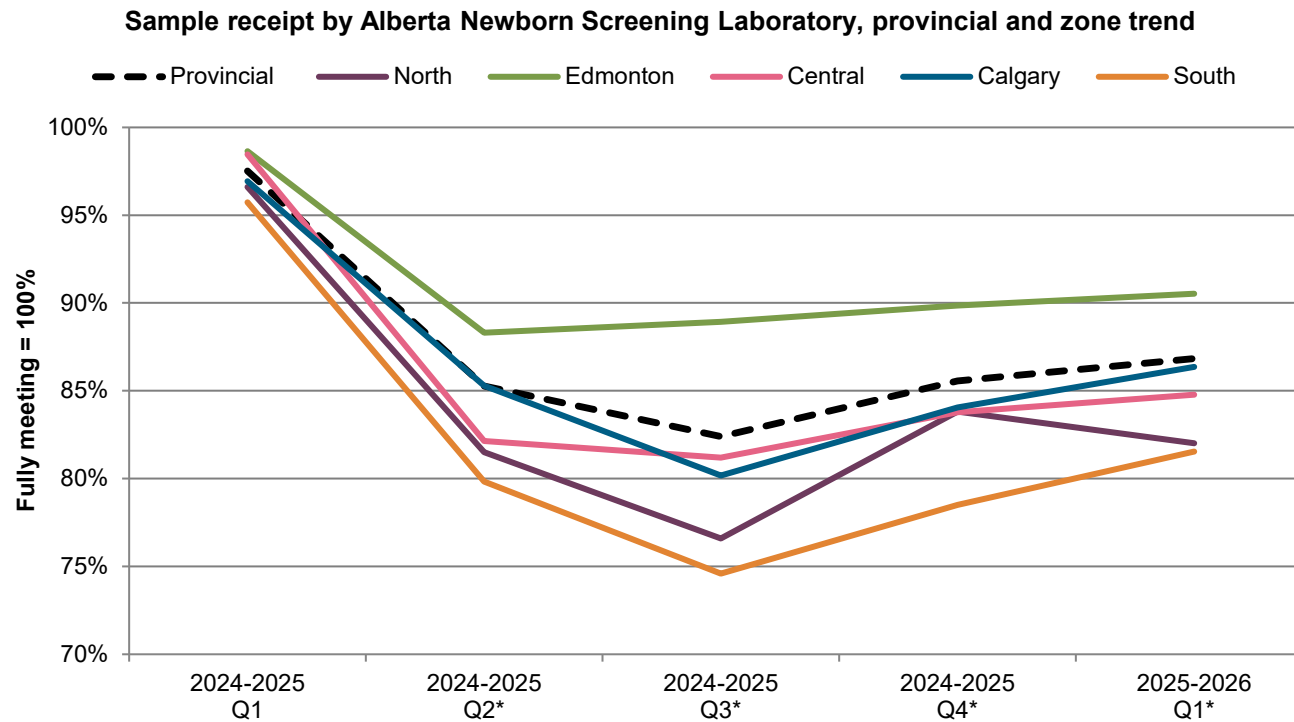


Q1 2025-2026	North	Edmonton	Central	Calgary	South	AHS Zone not assigned	Provincial total
Meeting standard (%)	<b>97.74%</b>	<b>98.79%</b>	<b>98.70%</b>	<b>98.60%</b>	<b>99.37%</b>	<b>93.91%</b>	<b>98.60%</b>
Meeting standard (n)	1384	4477	1137	5076	953	108	13135
Not meeting standard (n)	32	51	14	65	6	6	174
Unable to determine (n)	0	4	1	7	0	1	13
<b>Grand Total</b>	<b>1416</b>	<b>4532</b>	<b>1152</b>	<b>5148</b>	<b>959</b>	<b>115</b>	<b>13322</b>

<sup>4</sup> Data retrieved October 1, 2025 from ANSP Application Report 8, Section B. Data are for all registered screened infants by zone of responsibility. Details on AHS zone not assigned available upon request.



**Figure 5: Sample receipt by Alberta Newborn Screening Laboratory within 72 hours of sample collection<sup>5</sup>**



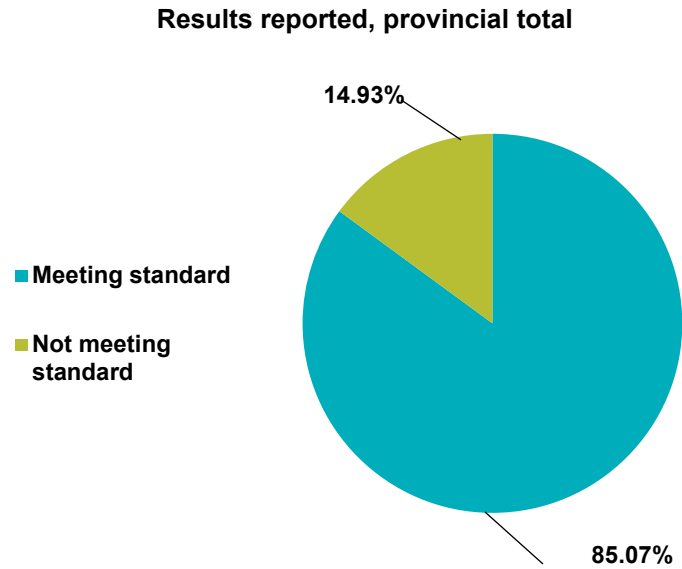
\*Implementation of Connect Care resulted in change to the receiving process and a new waypoint.

Q1 2025-2026	North	Edmonton	Central	Calgary	South	AHS Zone not assigned	Provincial total
Meeting standard (%)	82.01%	90.52%	84.78%	86.37%	81.55%	86.03%	86.83%
Meeting standard (n)	1213	4304	1014	4671	822	117	12141
Not meeting standard (n)	266	451	182	737	186	19	1841
Unable to determine (n)	0	0	0	0	0	0	0
<b>Grand Total</b>	<b>1479</b>	<b>4755</b>	<b>1196</b>	<b>5408</b>	<b>1008</b>	<b>136</b>	<b>13982</b>

<sup>5</sup> Data retrieved October 1, 2025 from ANSP Application Report 8, Section D. Data are for all received samples by zone of responsibility. Details on AHS zone not assigned available upon request.



**Figure 6: Results reported by Alberta Newborn Screening Laboratory within 96 hours of lab receipt (excluding cystic fibrosis)<sup>6</sup>**

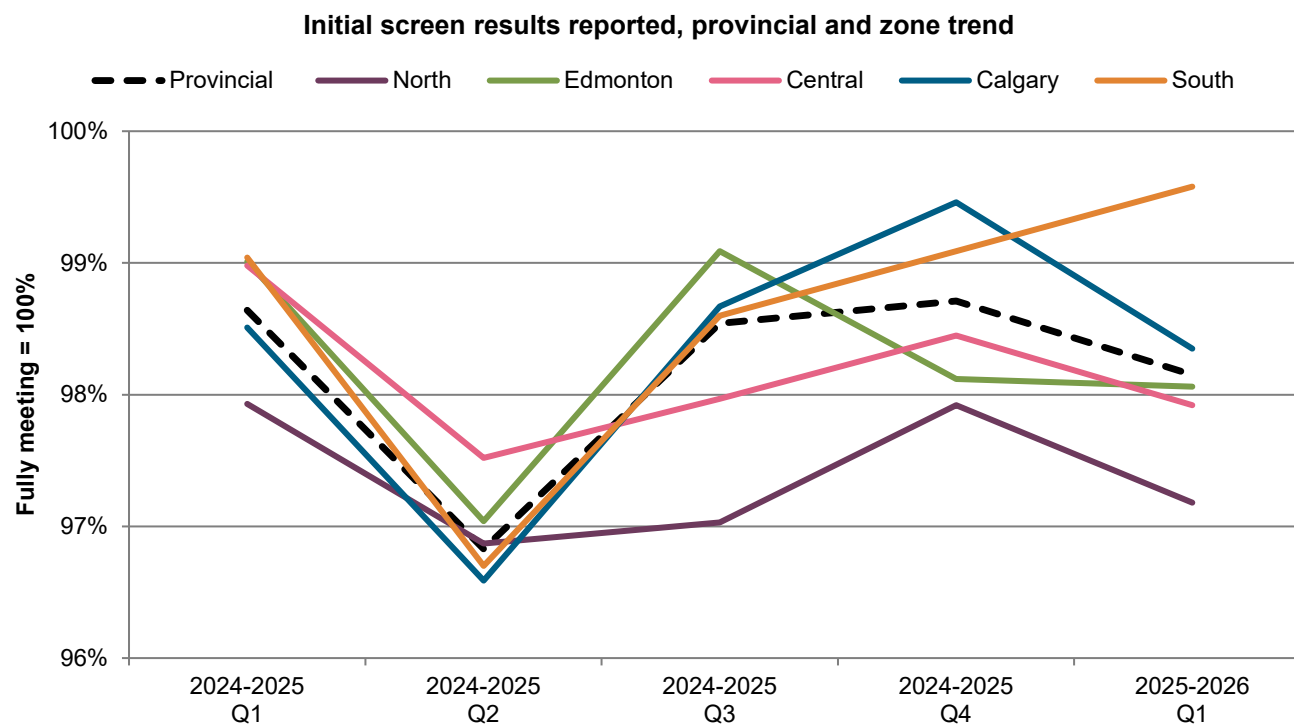


Q1 2025-2026	Provincial total
Meeting standard	11895
Not meeting standard	2087
<b>Grand Total</b>	<b>13982</b>

<sup>6</sup> Data retrieved October 1, 2025 from ANSP Application Report 8, Section E, Data are for all received samples excluding CF for all zones combined.



**Figure 7: Initial screen results reported by Alberta Newborn Screening Laboratory within 10 days of age (excluding cystic fibrosis)<sup>7</sup>**

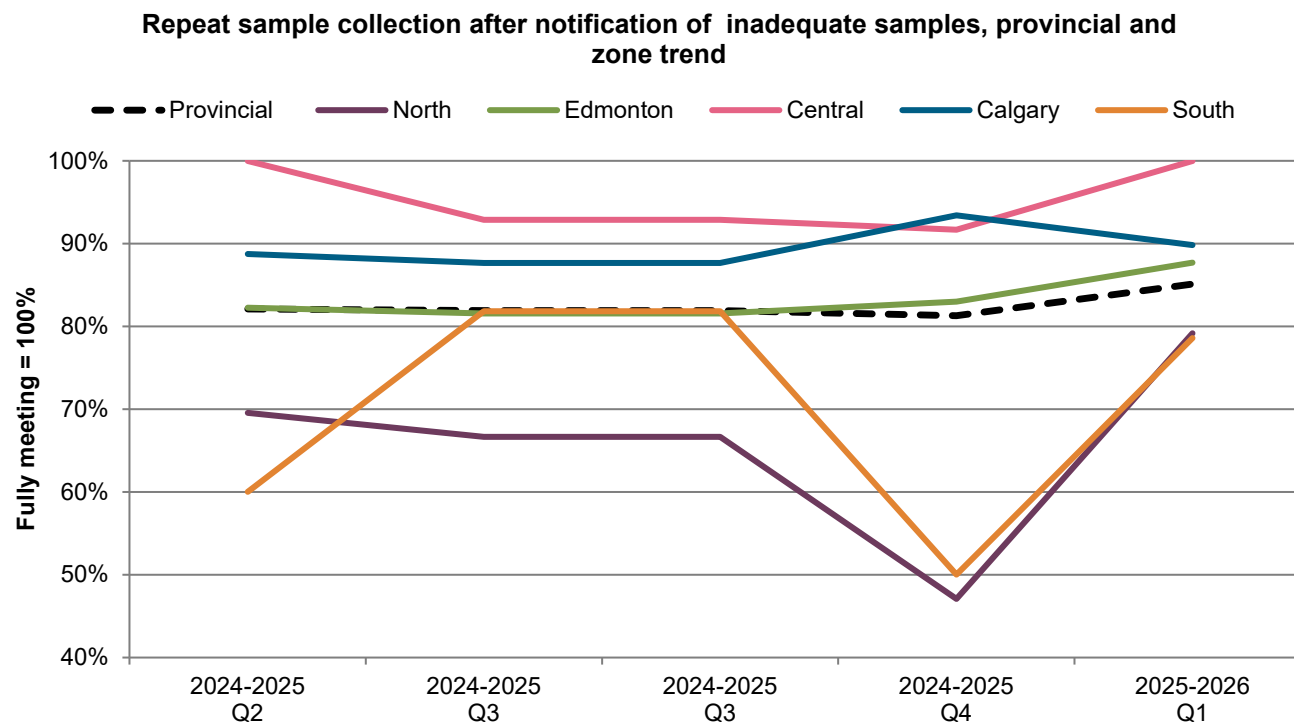


Q1 2025-2026	North	Edmonton	Central	Calgary	South	AHS Zone not assigned	Provincial total
Meeting standard (%)	97.18%	98.06%	97.92%	98.35%	99.58%	94.78%	98.15%
Meeting standard (n)	1376	4444	1128	5063	955	109	13075
Not meeting standard (n)	40	88	24	84	4	6	246
Unable to determine (n)	0	0	0	1	0	0	1
<b>Grand Total</b>	<b>1416</b>	<b>4532</b>	<b>1152</b>	<b>5148</b>	<b>959</b>	<b>115</b>	<b>13322</b>

<sup>7</sup> Data retrieved October 1, 2025 from ANSP Application Report 8, Section F. Data are for all registered screened infants by zone of responsibility. Details on AHS zone not assigned available upon request.



**Figure 8: Repeat sample collection within 96 hours of notification of reported inadequate samples<sup>8</sup>**

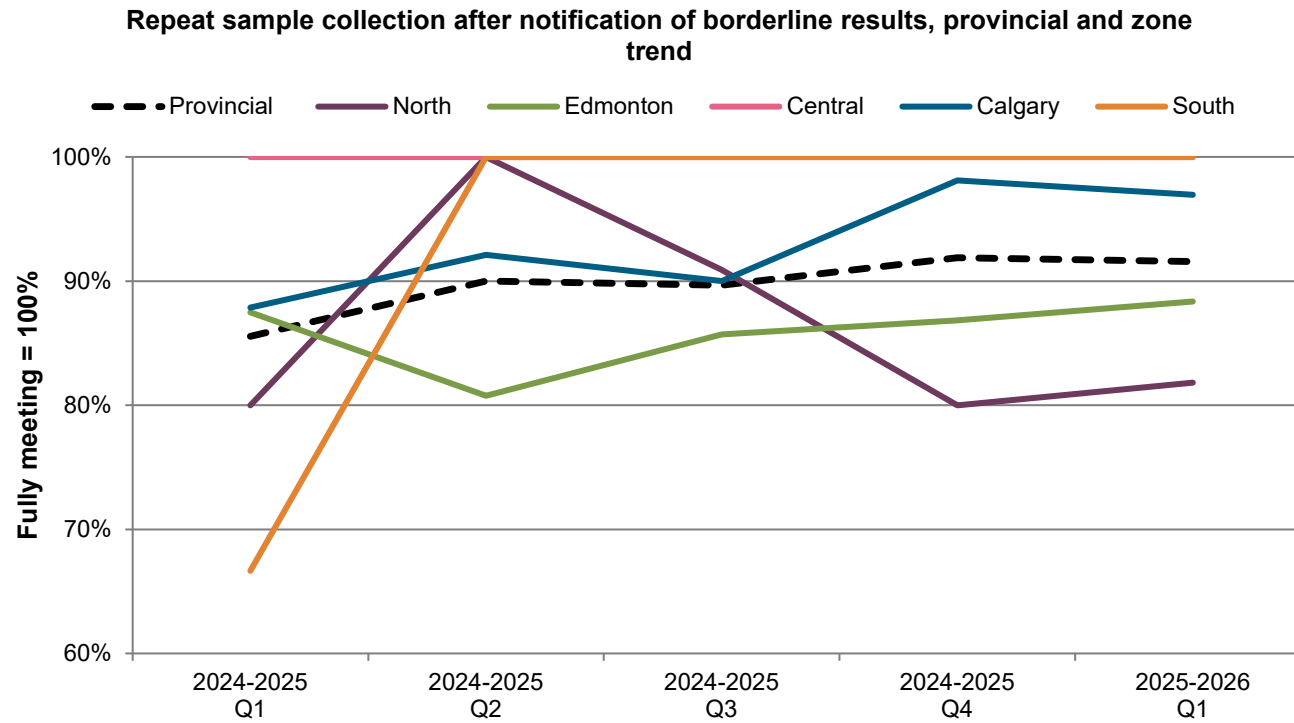


Q1 2025-2026	North	Edmonton	Central	Calgary	South	AHS Zone not assigned	Provincial total
Meeting standard (%)	79.17%	87.72%	100.00%	89.83%	78.57%	20.00%	85.12%
Meeting standard (n)	19	50	9	53	11	1	143
Not meeting standard (n)	5	7	0	6	3	4	25
<b>Grand Total</b>	<b>24</b>	<b>57</b>	<b>9</b>	<b>59</b>	<b>14</b>	<b>5</b>	<b>168</b>

<sup>8</sup> Data retrieved October 1, 2025 from ANSP Application Report 8, Section G. Data are for all notifications of reported inadequate results by zone of responsibility. Details on AHS zone not assigned available upon request.



**Figure 9: Repeat sample collection within 96 hours of notification of reported borderline results (excluding tyrosine)<sup>9</sup>**

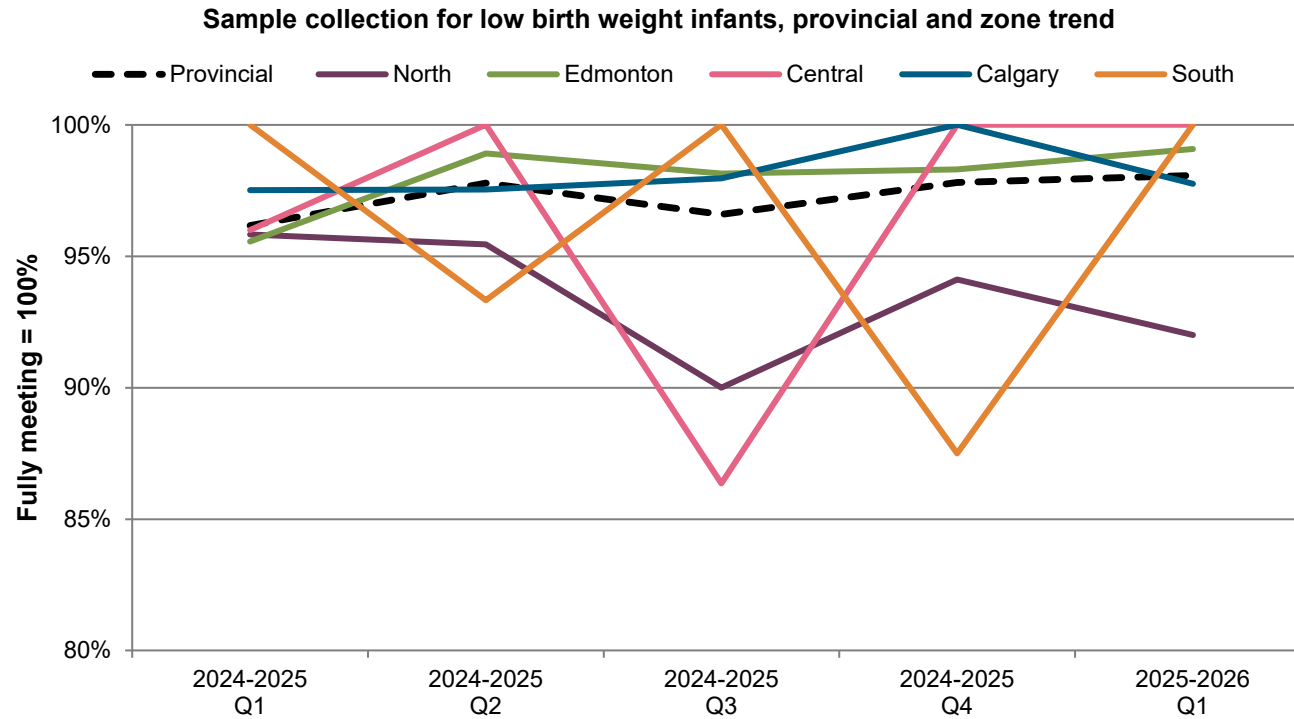


Q1 2025-2026	North	Edmonton	Central	Calgary	South	AHS Zone not assigned	Provincial total
Meeting standard (%)	81.82%	88.37%	100.00%	96.97%	100.00%	50.00%	91.59%
Meeting standard (n)	9	38	10	32	8	1	98
Not meeting standard (n)	2	5	0	1	0	1	9
<b>Grand Total</b>	<b>11</b>	<b>43</b>	<b>10</b>	<b>33</b>	<b>8</b>	<b>2</b>	<b>107</b>

<sup>9</sup> Data retrieved October 1, 2025 from ANSP Application Report 8, Section H. Data for all notifications of reported borderline results by zone of responsibility. Details on AHS zone not assigned available upon request.



**Figure 10: Sample collection between 21 days and 28 days of age for low birth weight infants<sup>10</sup>**



Q1 2025-2026	North	Edmonton	Central	Calgary	South	AHS Zone not assigned	Provincial total
Meeting standard (%)	92.00%	99.08%	100.00%	97.76%	100.00%	100.00%	98.08%
Meeting standard (n)	23	108	21	131	21	3	307
Not meeting standard (n)	2	1	0	3	0	0	6
<b>Grand Total</b>	<b>25</b>	<b>109</b>	<b>21</b>	<b>134</b>	<b>21</b>	<b>3</b>	<b>313</b>

<sup>10</sup> Data retrieved October 1, 2025 from ANSP Application Report 10 & 11. Data for all low birth weight infants by zone of responsibility. Details on AHS zone not assigned available upon request.

