

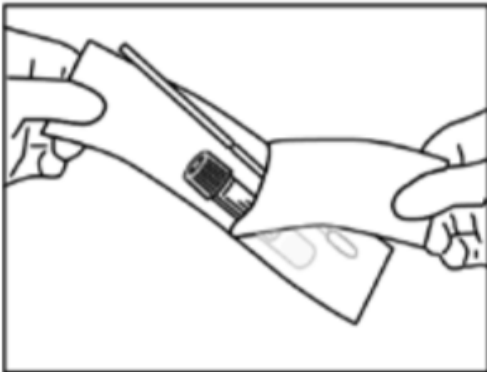
# Instructions for Rectal Swab Collection

Bulk stool collection is the preferred sample type over swabs. When unattainable, please use the following instructions for rectal swab collection.

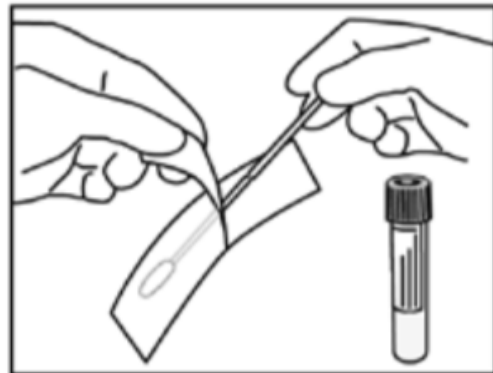
The FecalSwab<sup>®</sup> rectal swab is to be performed using the tube and swab applicator shown below:



**STEP 1** – Open the package with the green cap tube and swab.



**STEP 2** - Remove the green cap tube.



**STEP 3** - Remove swab from the packaging without touching the swab tip or shaft. Discard the packaging.



Date: August 16, 2023

Prepared by: Shigella Outbreak Public Health Task Force

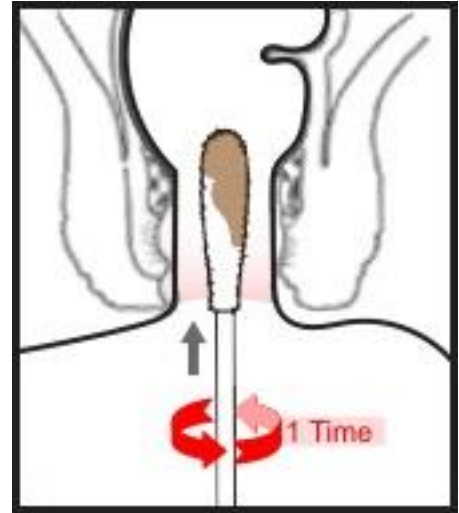
Please direct any questions to [MOH.Edmonton@albertahealthservices.ca](mailto:MOH.Edmonton@albertahealthservices.ca)

**STEP 4** - Gently insert the swab into the anal canal (bum) until resistance is felt.

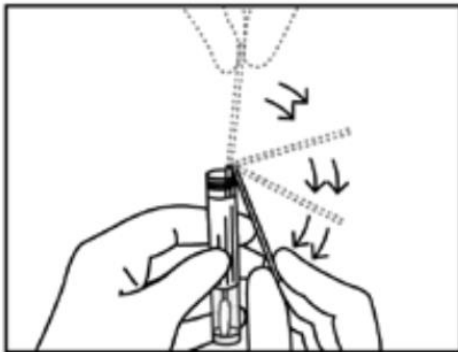
Gently rotate the swab a full circle one time, and then slowly remove it.

Note: swabbing the rectum (bum) is **not** sufficient.

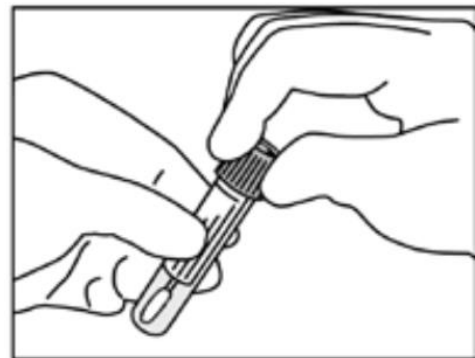
**Stool (Feces) must be visible on the swab.**



**STEP 5** - Insert the swab into the green cap tube, and break it off where there is a nick in the swab. Throw away the part of the stick that is not in the tube.



**STEP 6** - Screw the green top back on the tube tightly.



**STEP 7** – Wash hands with soap and water.

**STEP 8** – Place the sample in the provided plastic bag.

**STEP 9** – Submit the package to the care provider.

Date: August 16, 2023

Prepared by: Shigella Outbreak Public Health Task Force

Please direct any questions to [MOH.Edmonton@albertahealthservices.ca](mailto:MOH.Edmonton@albertahealthservices.ca)