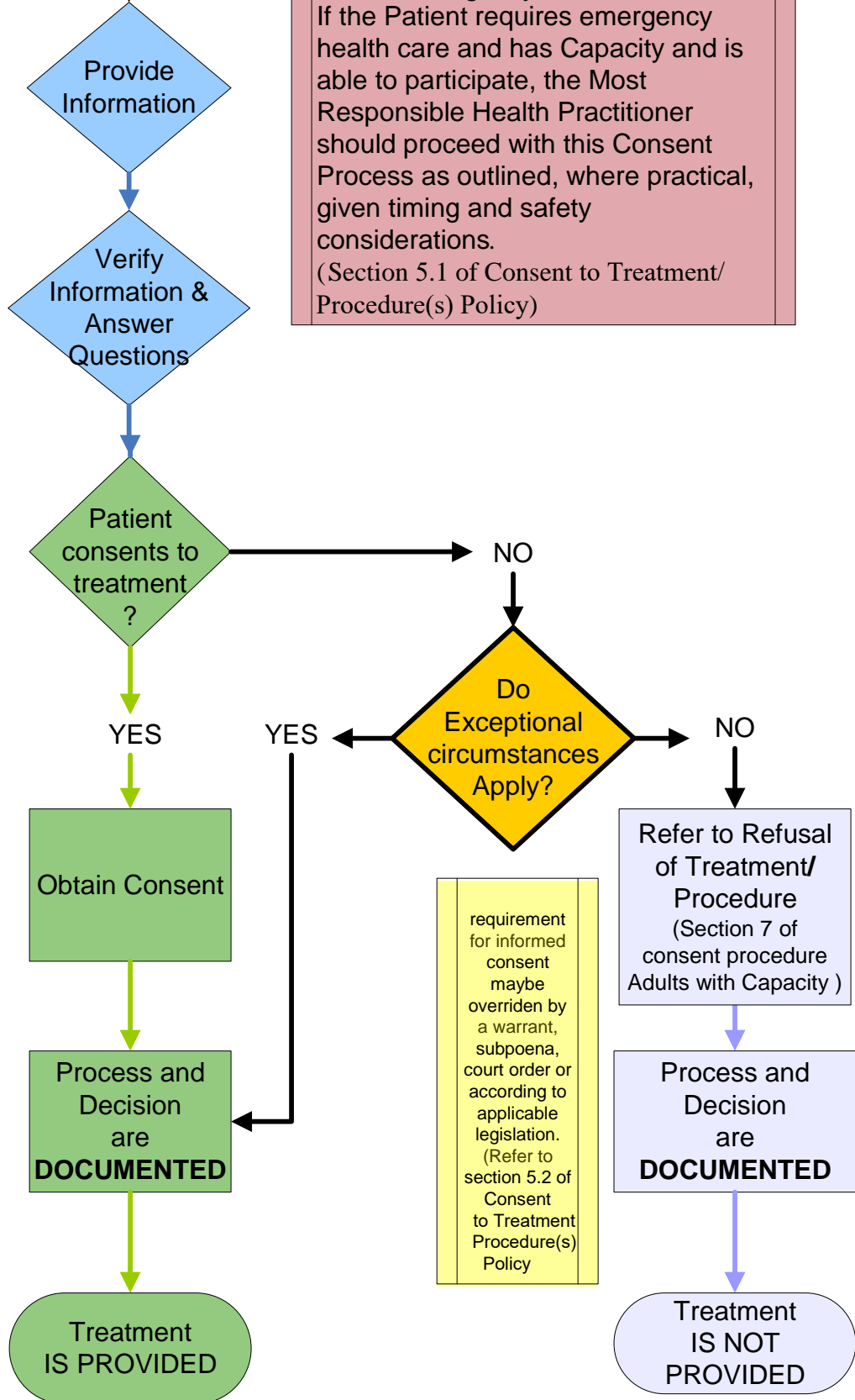


Health Care Consent Algorithm for Adults with Capacity

Adult Patient with Capacity

Capacity means the person understands nature, risks and benefits of the treatment/ procedure and the consequences of consenting or refusing

Emergency Health Care
If the Patient requires emergency health care and has Capacity and is able to participate, the Most Responsible Health Practitioner should proceed with this Consent Process as outlined, where practical, given timing and safety considerations.
(Section 5.1 of Consent to Treatment/ Procedure(s) Policy)



requirement for informed consent maybe overridden by a warrant, subpoena, court order or according to applicable legislation. (Refer to section 5.2 of Consent to Treatment Procedure(s) Policy)

DISCLAIMER

This Algorithm is intended to be a guide and is not to replace the content of the AHS policy Consent to Treatment/Procedure(s) and its related procedures or legal advice. Examples herein are for illustrative purposes only; the application of the AHS policy/procedures and legislation may vary depending on circumstances unique to each situation. Readers are encouraged to view the policy/procedure documents and legislation directly and should consult Professional Practice Consultation Service {practice.consultation@ahs.ca} if in need of clarification.