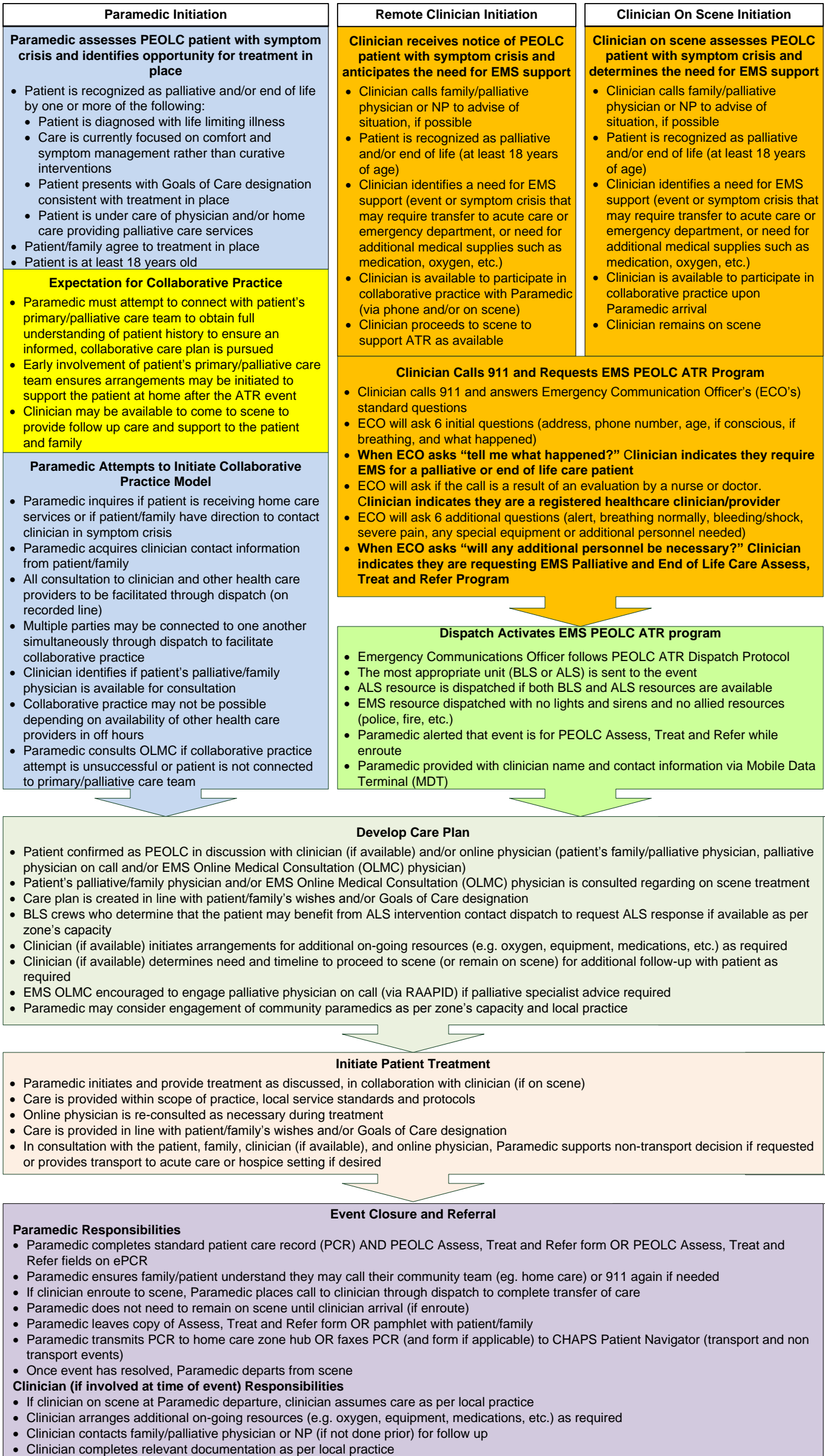


Paramedic provide care using collaborative practice with patient, family, clinician (if available) and online physician

Clinician communicates with family/palliative physician or NP as possible



ASSESS

TREAT

REFER

**Clinician** is defined as any regulated healthcare practitioner, as per zones capacity  
**Paramedic** is either a basic life support or advanced life support professional working for Emergency Medical Services  
**Online Physician** is defined as the patient's family/palliative physician, palliative physician on call and/or EMS Online Medical Consultation (OLMC) physician  
**Resolved** is defined as meeting the patient's needs and current wishes for care after discussion with patients and families  
**Collaborative Practice** is defined as inter-professional and inter-organizational communication and decision making to provide patient centered care (via phone and/or on scene)