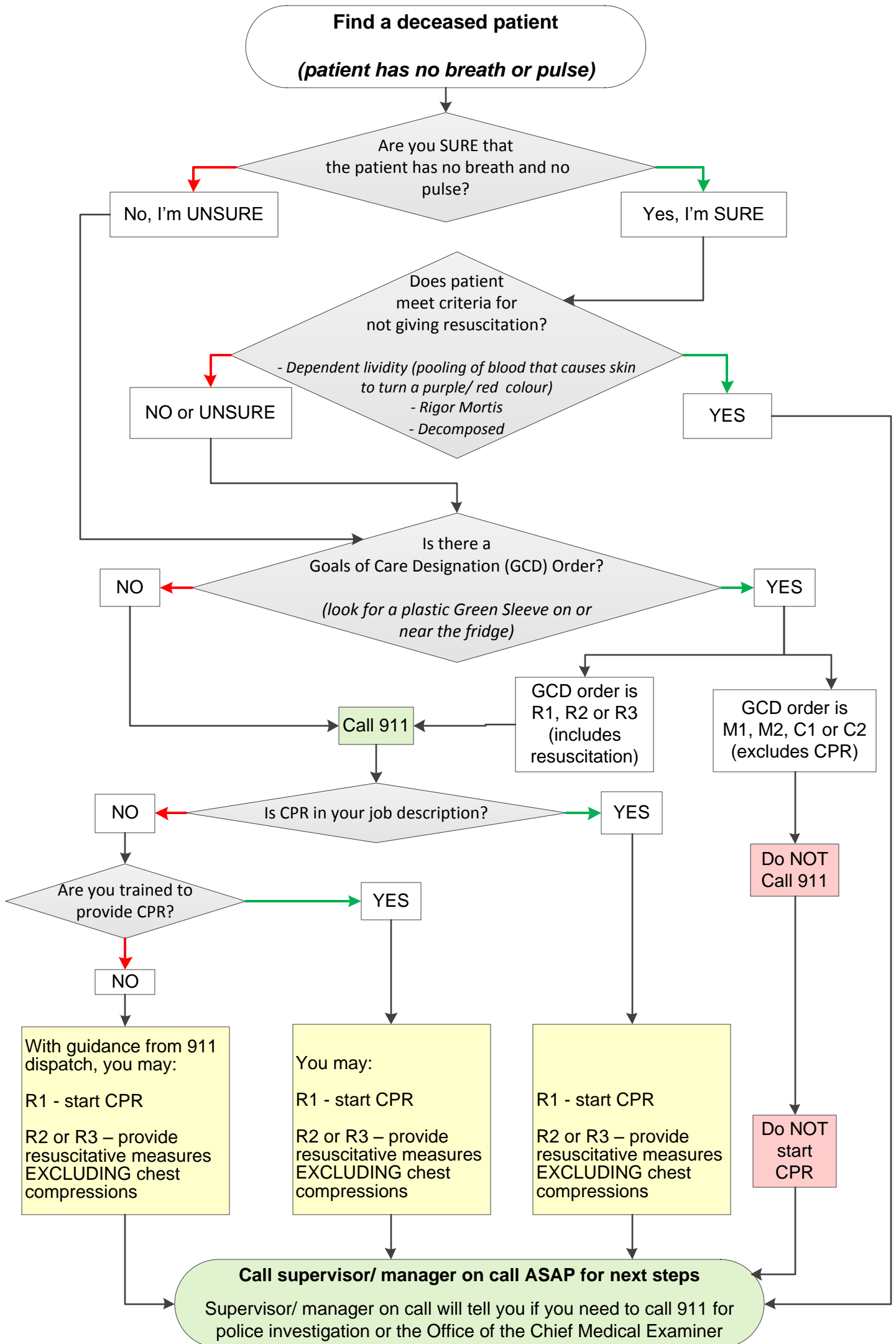


Patient's Death in the Home Care Setting (Private Home or Seniors' Lodge) - Algorithm

for AHS/ contracted service provider **unregulated*** Home Care health care provider in the home for **unwitnessed patient deaths**



*Nursing Attendant (NA), Home Support Aide, Home Support Worker, Assisted Living Aide, Residential Support Worker, Home Health Aide and Residential Care Aide