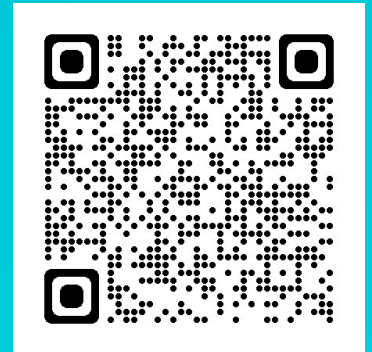


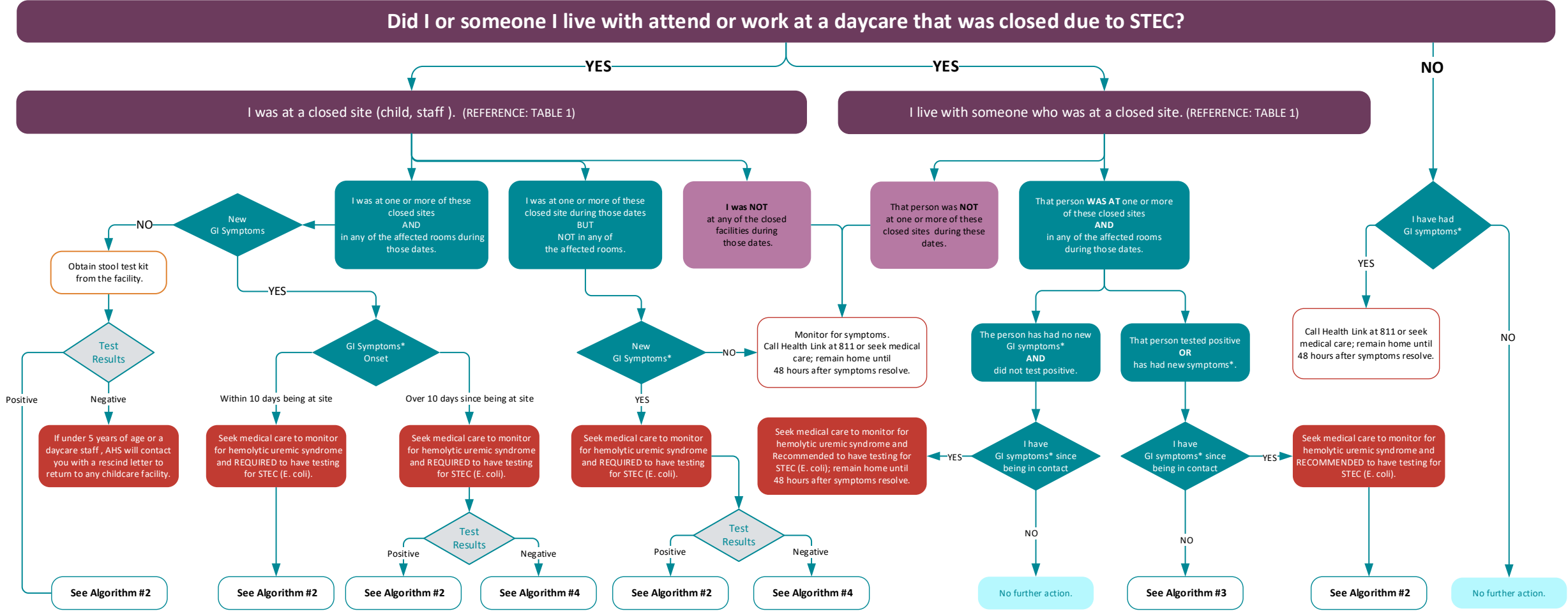
# E. coli Outbreak

STEC Algorithms for Health Practitioners,  
Parents and Caregivers

Last updated: September 21, 2023



# Algorithm #1



**Test Kits:** For information about ordering STEC (E. coli), test kits visit [www.ahs.ca/ecoli](http://www.ahs.ca/ecoli)

\* GI symptoms refers to diarrhea AND/OR nausea AND/OR stomach cramps AND/OR vomiting AND/OR fever without any respiratory symptoms.

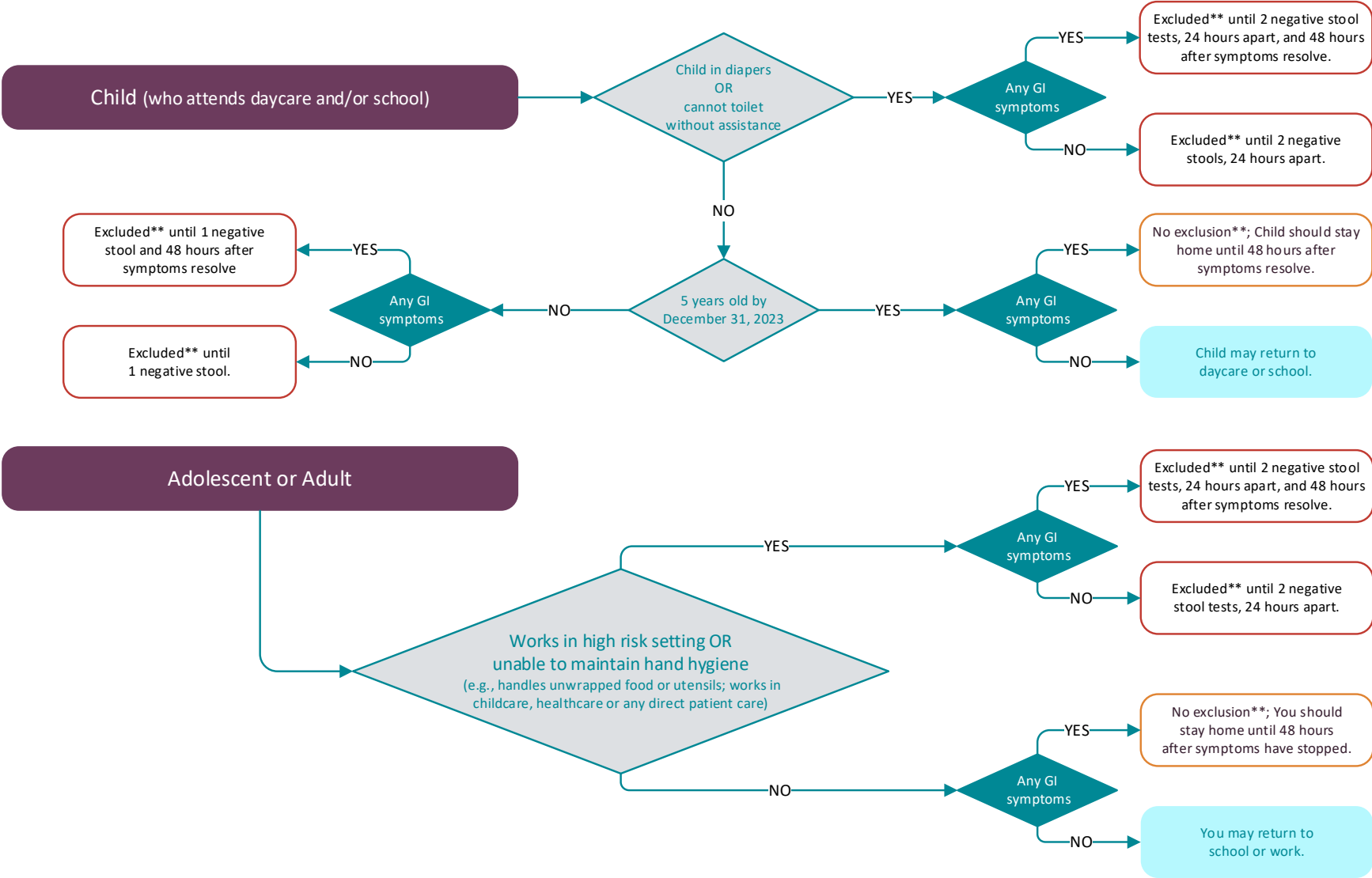
\*\*To be excluded means that you cannot return to a sensitive situation or occupation (work handling food; childcare or healthcare staff ; and for children, attendance at a childcare facility or similar facilities) until you receive a rescind letter from AHS.

# Sites Closed to STEC

FACILITY	ROOM AFFECTED	EXCLUSION IF ATTENDED FROM
Fueling Brains - Braeside, West 85 <sup>th</sup> , New Brighton, Centennial, and McKnight	Entire facility	August 25 – Sept 1
Kidz Space	Entire facility	August 25 – Sept 1
Vik Academy Okotoks	Entire facility	August 25 – Sept 1
MTC Childcare	Promenade and McKenzie Rooms	August 31 – Sept 16
Calgary JCC	Entire facility	Sept 6 – 14
Cancare Children's Centre – Scenic Acres	Busy Bees, Bumble Bees, and Butterflies Rooms	Sept 8 – 15
Active Start – Country Hills	Starfish and Dolphin preschool classes	Sept 1 – 15
Renert Junior Kindergarten	Entire facility	Sept 6 – 15
CEFA Early Learning – MacLeod Trail	Junior Kindergarten 3-1	August 29 – Sept 15
First Class Childcare – Shawnessy	Main daycare room	Sept 5 – 16

# Algorithm #2 - Confirmed/Probable or Symptomatic Contact

If you have tested positive for STEC and/or have had any GI symptoms, you should seek medical care to monitor for hemolytic uremic syndrome.

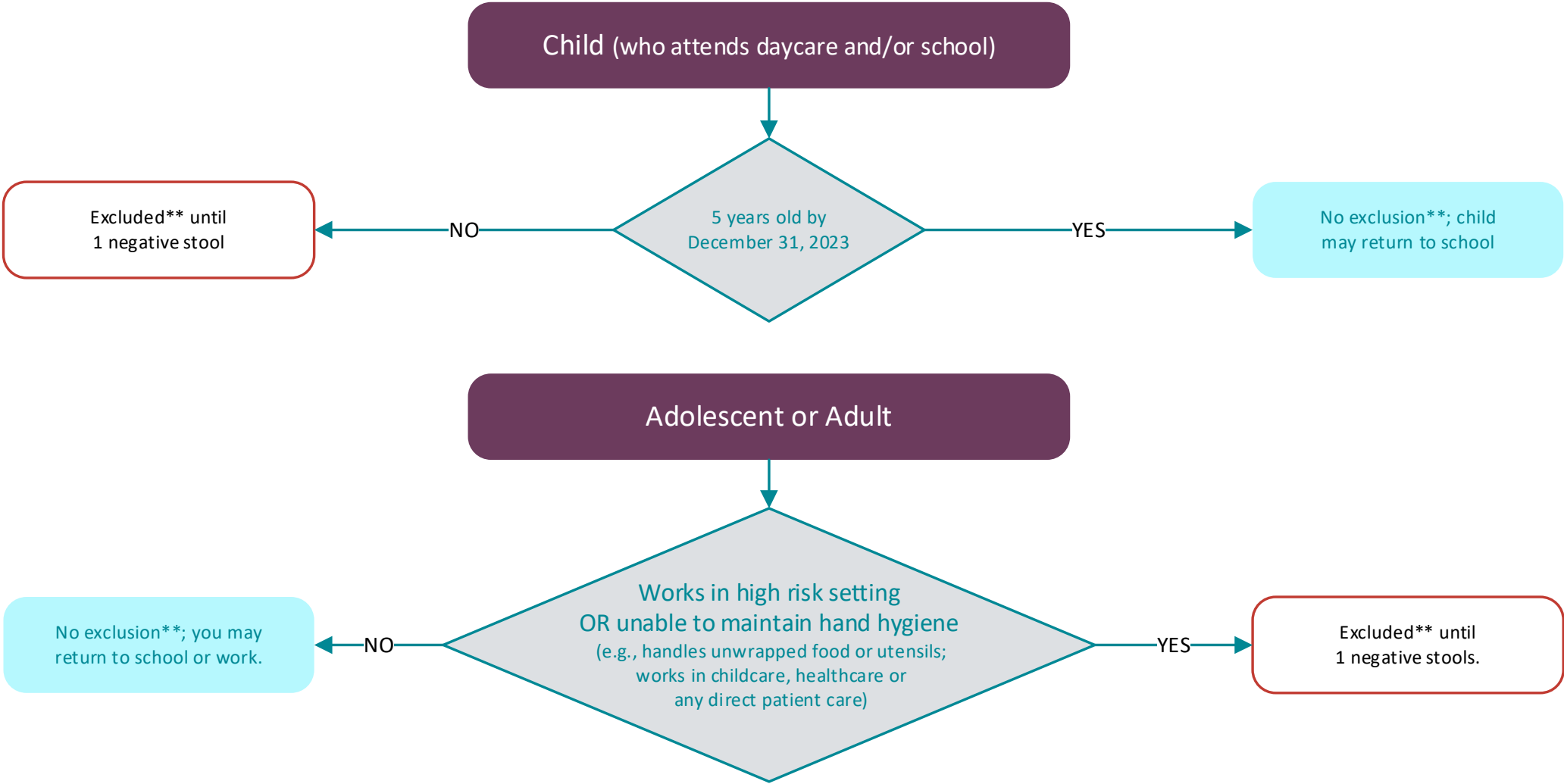


**Test Kits:** For information about ordering STEC (E. coli), test kits visit [www.ahs.ca/ecoli](http://www.ahs.ca/ecoli)

\* GI symptoms refers to diarrhea AND/OR nausea AND/OR stomach cramps AND/OR vomiting AND/OR fever without any respiratory symptoms.

\*\*To be excluded means that you cannot return to a sensitive situation or occupation (work handling food; childcare or healthcare staff ; and for children, attendance at a childcare facility or similar facilities) until you receive a rescind letter from AHS.

# Algorithm #3 - Asymptomatic Contact of Confirmed/Probable Case

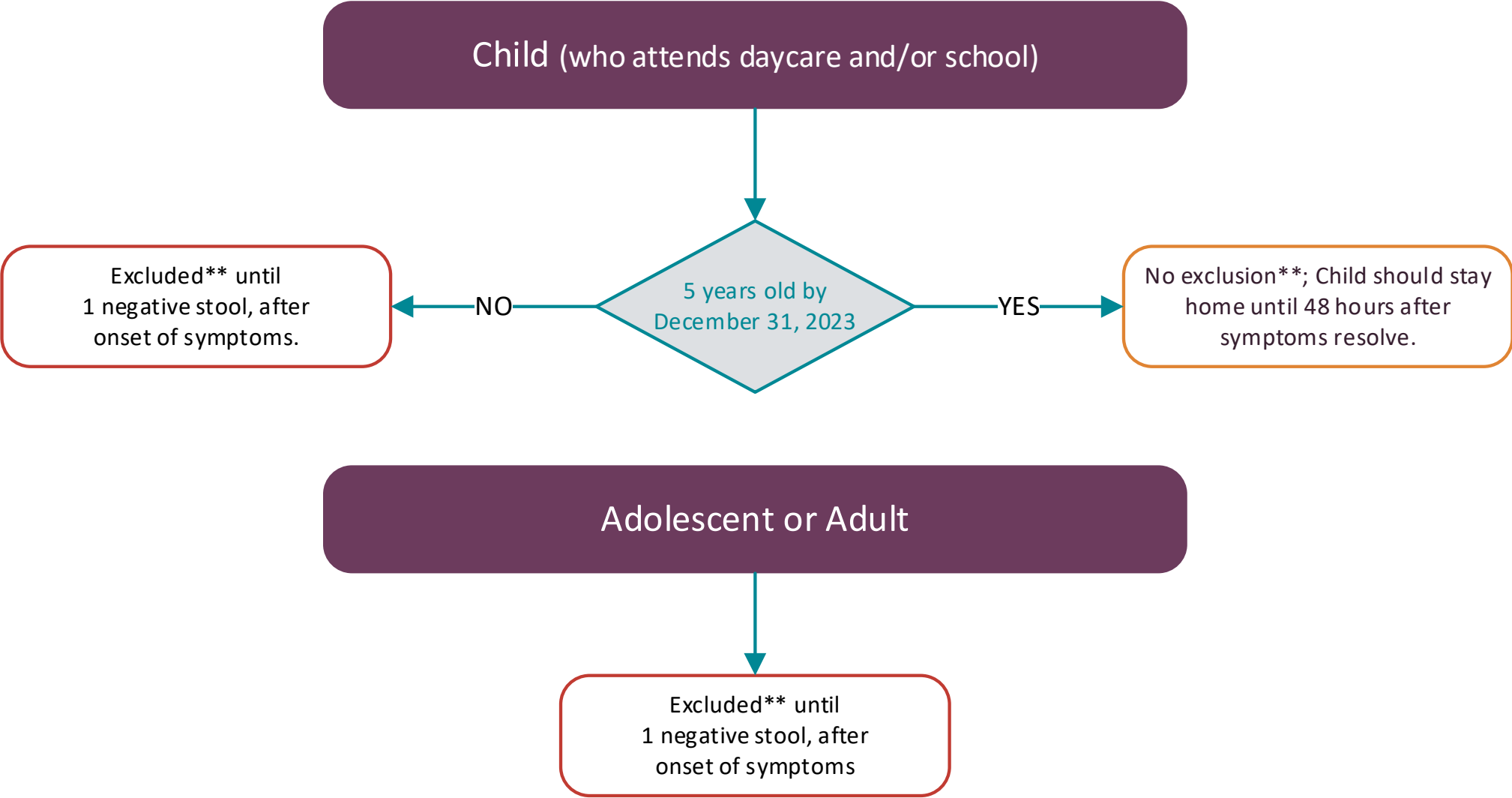


**Test Kits:** For information about ordering STEC (E. coli), test kits visit [www.ahs.ca/ecoli](http://www.ahs.ca/ecoli)

\* GI symptoms refers to diarrhea AND/OR nausea AND/OR stomach cramps AND/OR vomiting AND/OR fever without any respiratory symptoms.

\*\*To be excluded means that you cannot return to a sensitive situation or occupation (work handling food; childcare or healthcare staff; and for children, attendance at a childcare facility or similar facilities) until you receive a rescind letter from AHS.

# Algorithm #4 – Suspect Case



**Test Kits:** For information about ordering STEC (E. coli), test kits visit [www.ahs.ca/ecoli](http://www.ahs.ca/ecoli)

\* GI symptoms refers to diarrhea AND/OR nausea AND/OR stomach cramps AND/OR vomiting AND/OR fever without any respiratory symptoms.

\*\*To be excluded means that you cannot return to a sensitive situation or occupation (work handling food; childcare or healthcare staff ; and for children, attendance at a childcare facility or similar facilities) until you receive a rescind letter from AHS.