



Edson Healthcare Centre

Virtual Hospital Tour



Primary Care
Alberta



Alberta Health
Services



Welcome to the Edson Healthcare Centre

3837 6th Ave, Edson,
AB T7E 0C5
780-725-6252

Parking

- Parking is free and located in front and to the side of the hospital, beside the Emergency Entrance
- Please do not leave your vehicle in the loading zone
- Disabled parking stalls are available



Main Entrance

This is the entrance used for blood work or visiting public health during pregnancy



Registration

- Please present to registration prior to blood work
- The registration desk hours are from 8:00 am – 4:00 pm weekdays
- If blood work is booked after 4:00 pm registration will take place in the emergency department
- Alberta Health Services policy is to have you present with your Alberta Healthcare Card and your photo ID at the time of registration



Public Health

- We encourage moms between 27-32 weeks gestation to get their Tdap vaccine (this can be administered anytime during pregnancy; 27-32 weeks are an optimal time)
- We encourage all family and friends that will be around baby ensure that their vaccines are up to date to protect baby
- Public health phone number (780)725-6083 ext. 4



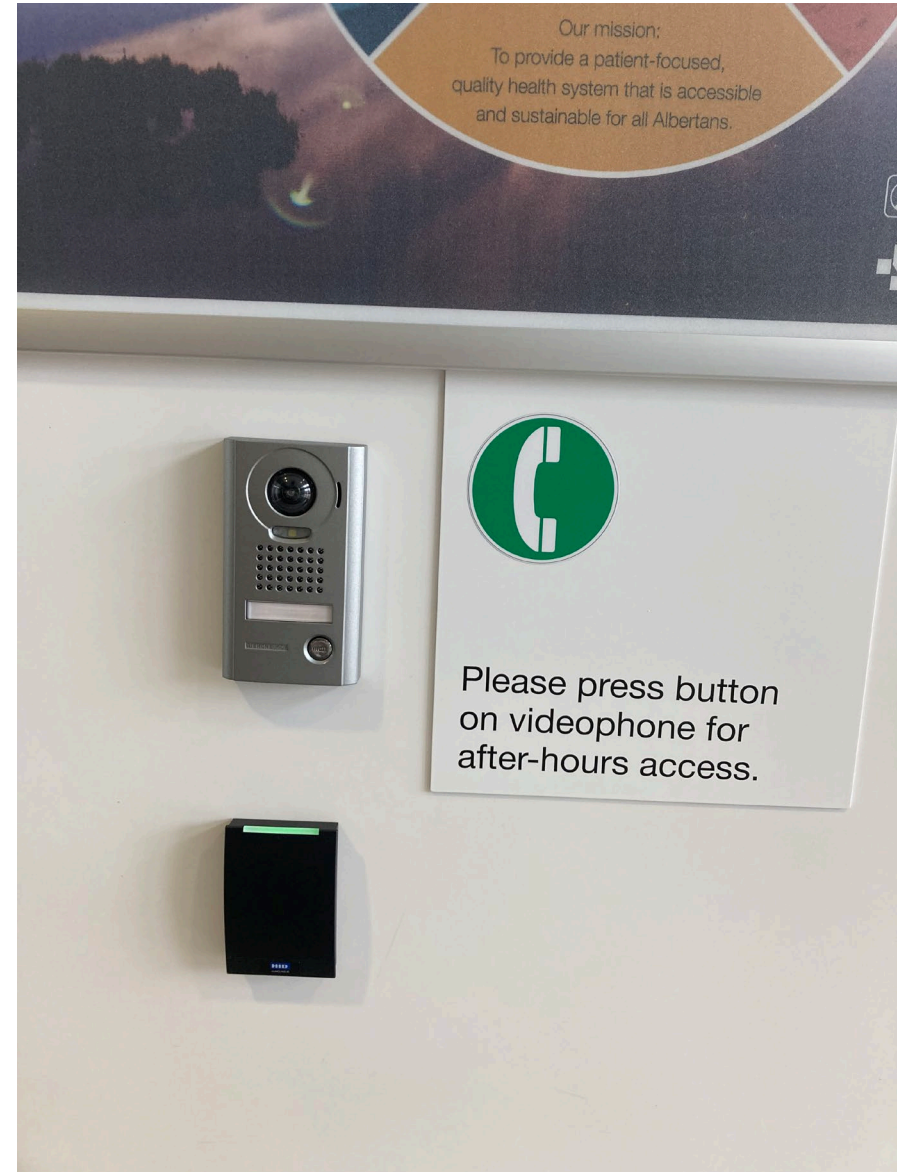


Entering at Night or When in Labour

PLEASE ENTER THE HOSPITAL THROUGH THE EMERGENCY
DOORS AFTER 8:00 PM OR IF YOU ARE IN LABOUR

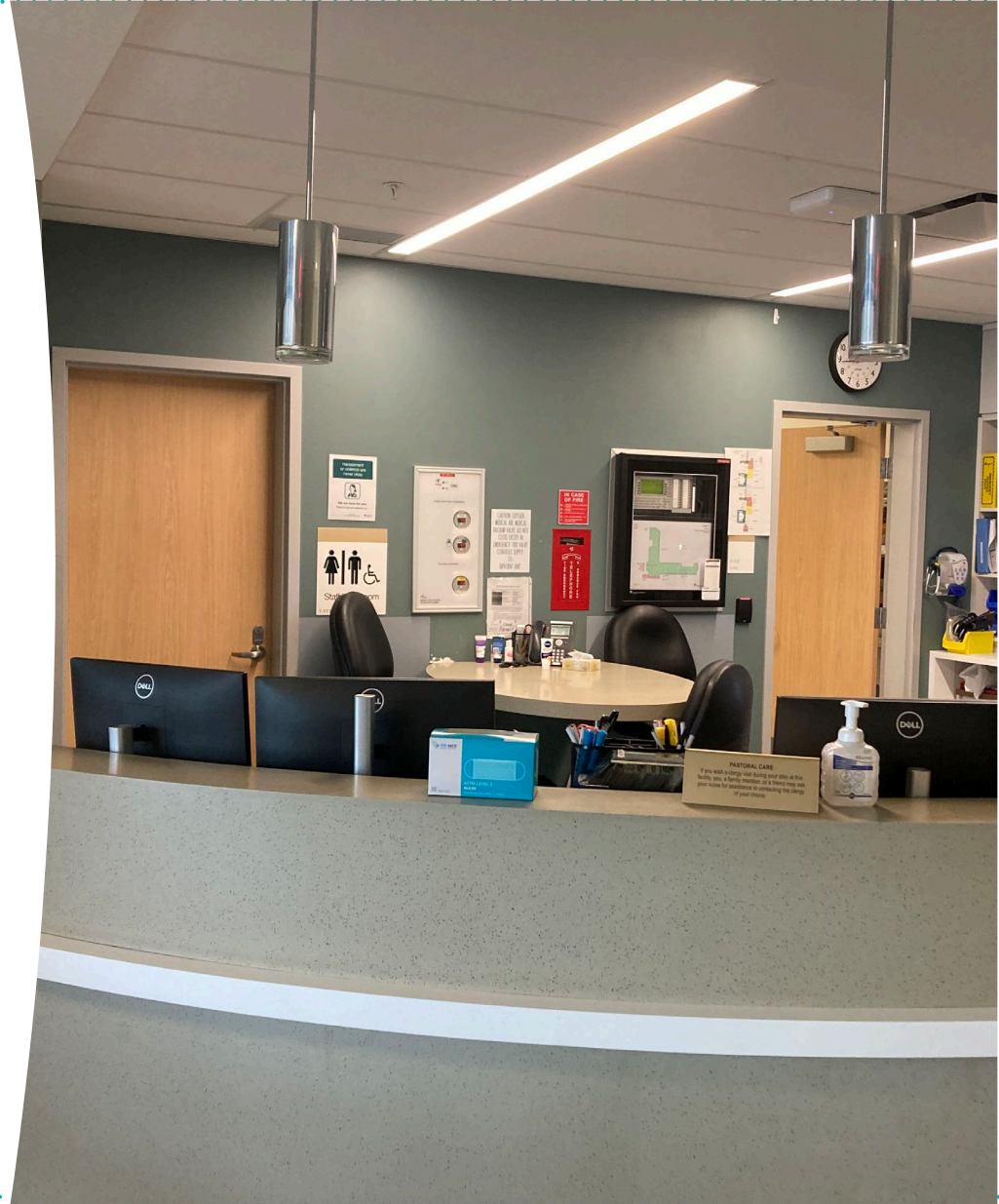
Entering at Night

- To enter the hospital, press the emergency entrance buzzer located on the wall on the right-hand side
- If you are in labour and less than 36 weeks gestation, proceed to the ER on your left
- If you are in labour and 36 weeks plus gestation, proceed to acute care on your right



Nursing Desk

- Go to the nursing desk if you are at least 36 weeks gestation and in labour
- Various staff can be found at the desk such as a unit clerk, LPN, RN, pharmacist and/or physician
- The unit clerk can register you into the hospital



Labour and Delivery

- Edson has two private labour and delivery rooms
- Beds can be adjusted in many ways for comfort and position changes
- Beds have hand grips, squatting bars, and footrests
- The lower third of the bed can be lowered or removed for delivery of baby



Fetal Monitors

Fetal heart rate can be monitored by either:

- Handheld doppler monitors
- Fetal Heart Monitor that are held to the abdomen with a stretchy belt.

The monitor records the baby's heart rate and the mother's contractions



Bathroom and Shower

The bathrooms in the labour and delivery rooms are equipped with a shower that has a spray nozzle that can be adjusted

Support person is welcome to bring a bathing suit to assist in the shower



Birthing Balls

Each delivery room is equipped with at least one birthing ball to assist with labour.

Please ask the nurse for assistance for different positions with the ball.



More about the Labour and Delivery Rooms

- A cot is in the room for a support person to sleep in
- Call bells are used if assistance is needed – usually found on the side rail of the bed and in each bathroom
- Meal trays for mom are delivered at breakfast, lunch, and supper
- If baby is requiring extra attention the baby will be assessed in the warming assessment area on the left of the picture



Operating Room

- If needed, a cesarean section can be performed under a spinal, epidural, or general anesthetic.
- One support person may be allowed to be present in the operating room



Infant Care

- Most of the time a baby can be placed skin to skin with mom immediately after birth. This is encouraged for the first 1-2 hours after delivery. The assessment by the nurses and physician will take place on the chest.
- If breastfeeding, it is encouraged that baby have an opportunity to feed in the labour and delivery room
- Baby will receive a leg identification band that matches mom's wrist identification band prior to leaving the room



Neonatal Intensive Care Unit (NICU)



- Edson Healthcare Centre does not have a NICU
- Babies that require more care are transported to a NICU in Edmonton

Postpartum Room

- If space is needed, you will be transferred to a postpartum room for the remainder of the hospital stay
- These are private rooms
- For an uncomplicated vaginal delivery, mom and baby stay for 1-2 days and 2-3 days for uncomplicated cesarean section delivery
- A cot is available for a support person to sleep in these rooms as well



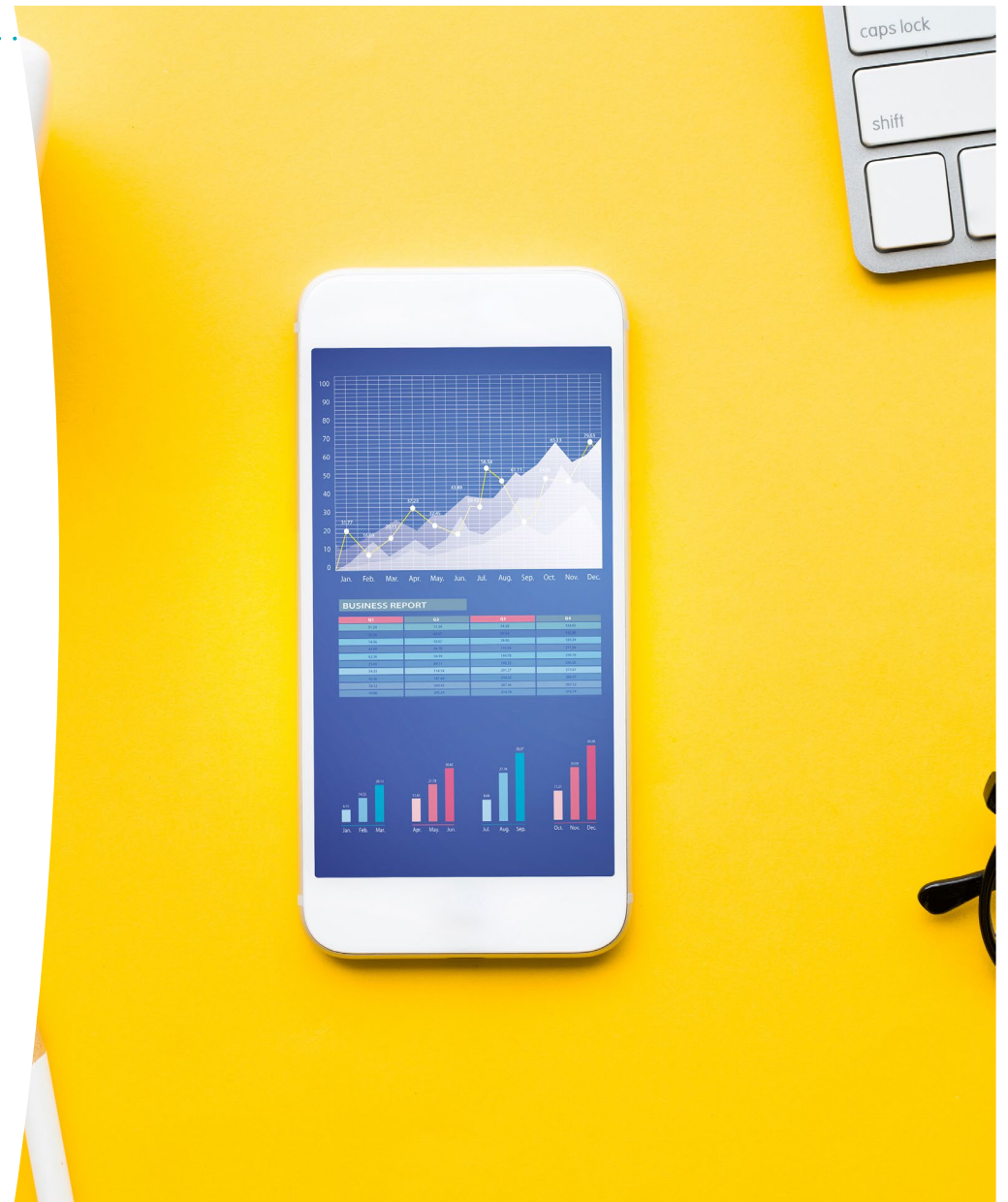
Newborn Care

- Parents have the right to always remain with their baby
- Baby stays with mom 24 hours a day and sleeps in an open bassinet
- If walking around the unit with your baby, push your baby in the bassinet. For safety reasons, babies are not carried in arms while in the hospital
- For safety reasons, do not leave your baby unattended in the room. Babies are not allowed to leave the hospital until discharged
- Parents should always see photo identification of hospital staff who ask to take your baby from the room



Phones and Technology

- Cellphones can be used in the hospital
- Free Wi-Fi is available
- If you want to listen to music during delivery, you will need to bring your own speakers, earphones, charges, etc.
- There are televisions available in each room



Cafeteria

- The cafeteria is located downstairs on floor 0
- The cafeteria is open Weekdays 8:00 am until 2:00 pm
- Lunch specials are available from 11:30 am until 1:30 pm
- The cafeteria will accept cash, debit, or credit card
- There is a water/ice machine located by the cafeteria



Kitchenette

- There is a kitchenette located between the labour and delivery rooms and the nurse's station
- If placing items in the fridge, please label with your name
- Water/Ice Machine located in kitchenette



Vending Machines

- Vending machines are located beside the lab and in the Emergency waiting room. Cash only





Family Lounge

The family lounge is located to the left when you enter
Acute Care

It is a quiet space for families to visit

Best Wishes to you!



- For more information or to register for prenatal classes contact: Edson Public Health (780)725-6083 ext. 4
- Prenatal classes are located in the hospital left/East of registration or the opposite end of the hospital from the Emergency Entrance
- Public Health will contact you after being discharged from hospital for an assessment of both mom and baby
- If you have health questions or concerns: contact Health Link at 811



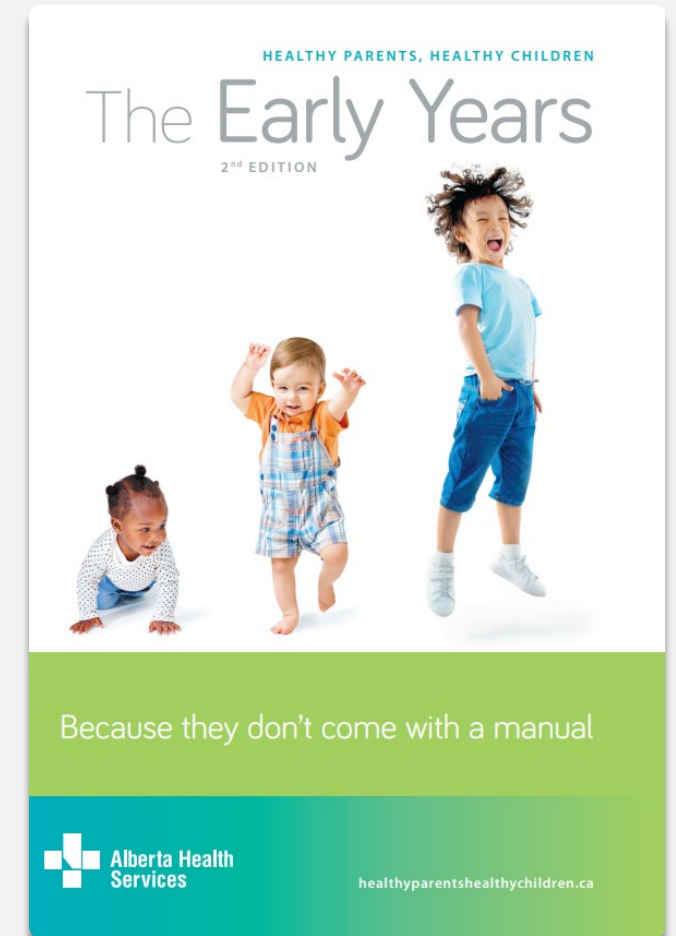
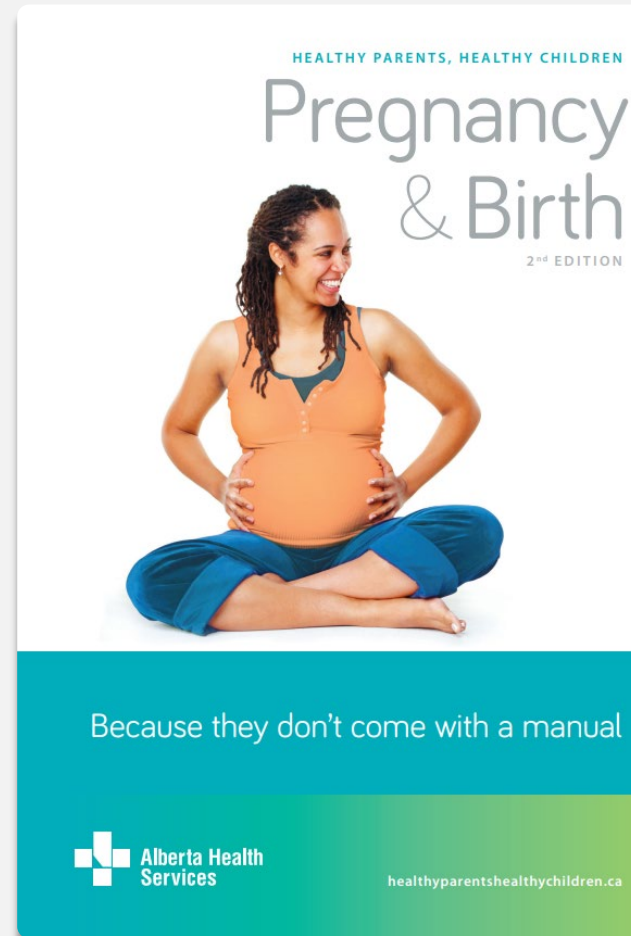
Primary Care
Alberta



Alberta Health
Services

For more information on pregnancy, labour and delivery, preparing for your baby and what to do once your baby is born, visit www.healthyparentshealthychildren.ca

Please ask your doctor or public health nurse for a copy of the Healthy Parents Healthy Children book, if available



Primary Care
Alberta



Alberta Health
Services