

let's talk



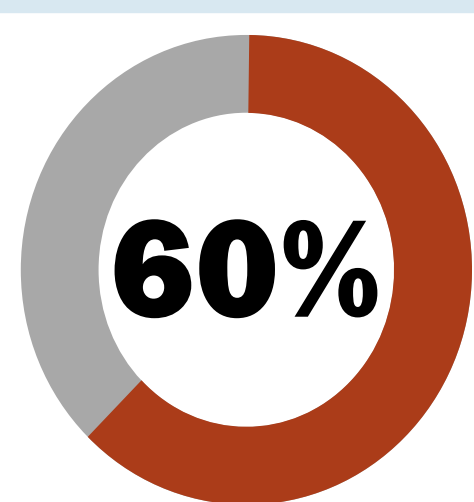
REFERRALS

THE PROBLEM

I wish I knew which specialist to refer my patient to.



Family Physician



Of family physicians express frustration with finding an available specialist (Buske, 2012)

Where can I find the appropriate referral form?



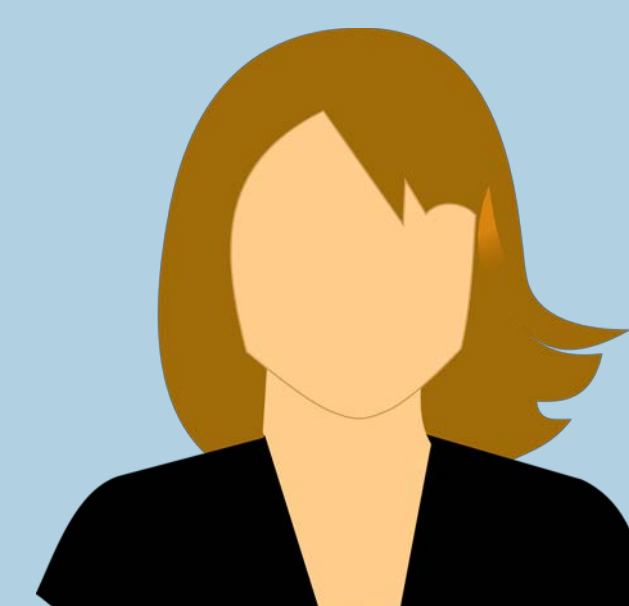
Healthcare Provider

How long will it take to see the specialist?



Patient

I wish I had more information to provide to the patient and our medical office.

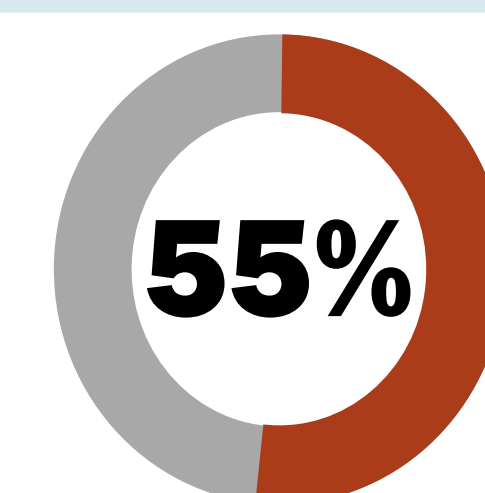


Clerk

The information on this referral is incomplete – again.



Specialist



Of specialists express frustration with insufficient supporting information on a referral (Buske, 2012)

Reference: Buske, L. (2012, August). Experiences with Referrals: Results of two surveys. Canadian Collaborative Centre for Physician Resources. Retrieved from <https://www.cma.ca/Assets/assets-library/document/en/advocacy/28-Referrals-e.pdf>

THE SOLUTION



Alberta Referral Directory

An Alberta Health Services Path to Care Program



A secure, centralized, online directory



Access to service and consultant demographics, referral guidelines & referral forms



Searchable database by condition, service, & consultant (physician)



Communication processes & estimated wait times by service



Developed in partnership with Alberta Medical Association & Alberta Health

3,929

viewership hits in August 2018

4,103

active & searchable profiles

5,116

of physicians searchable in the ARD

82%

average active profile completeness

Check us out at

www.albertareferraldirectory.ca