

February 4, 2011

## South Health Campus

Scheduled to open in spring 2012, the South Health Campus will be a full service hospital that will provide new capacity to Calgary in several priority areas, including women's health, special care nursery, emergency, surgery, medicine, critical care, and mental health inpatient and ambulatory services.

Construction of the South Health Campus began in August 2007, and the building will be ready for occupancy in early 2012. The site is located at Deerfoot Trail South and 196th Avenue S.E. The Government of Alberta has committed \$1.31 billion toward the first phase of this project and the construction of the facility is being overseen by Alberta Infrastructure.

The site for the campus is 44 acres with a five-kilometre perimeter. At full build, the campus will be roughly the same size as Chinook Centre. The four tower cranes that are being used at the campus for construction are the largest in North America. The site has its own cement plant, and at peak construction the campus has more than 1,400 people working on site.

The campus will open with a phased approach, beginning in spring 2012 and expected to be completed in 2013. The out-patient/clinic areas will be the first to open on the site.

With a facility theme of "People, Village, Nature", the campus is designed to be a healing environment. The campus will be distinguished by the kind of service it delivers, which will bring community and nature together. The campus teams will focus on inter-professional relationships, extensive use of state-of-the-art technologies and community based care.

Ultimately, 2,400 staff and 183 physicians will be working on the site. Recruitment plans are underway. The phased opening will ensure that AHS is able to recruit the staff and physicians required for the facility. The hiring process has begun for program leadership positions and various support staff.

### **Phase 1 development of the South Health Campus will include:**

- Approximately 156,000 square meters of developed space;
- 298 beds and bed equivalents on site, including those for inpatients, special care nursery and day procedures.
- 11 Operating Rooms;
  
- 30 Emergency Department treatment areas with capacity for 40,000 patient visits annually.
- Capacity for 200,000 outpatient visits annually in 12 outpatient clinics, including neuroscience, pulmonary and mental health, which will offer same-day treatment and assessment for those patients not requiring overnight stay;
- Endoscopy and bronchoscopy suites;

- Three additional specialty ambulatory clinics including:
  - Muscular Skeletal Centre (MSK),
  - Minor surgery suites
  - Cardiac diagnostics area including Cardiac MRI and CT;
- Highly technical core service areas: emergency, intensive care, diagnostic imaging and laboratory services;

## Environmental Footprint

Environmental sustainability is part of the design and construction of the campus, which allows Alberta Health Services to seek a LEED Silver designation upon completion of the project. If successful, the South Health Campus will be the first greenfield, major tertiary health care facility in Canada to achieve this LEED designation.

The use of “green” materials, local products where possible, and waste management practices are part of the design and construction of the South Health Campus. Once opened, the facility maintenance teams will continue to champion the Alberta Health Services mandate of sustainability through day-to-day operational practices.

## Exterior Design and Images

The environment and the community have also been important considerations in the exterior design of the South Health Campus. The intent of the exterior design is to blend the campus into the natural surroundings and minimize the massive scale in order to have a building that does not appear institutional and is a part of the neighbouring communities.

**The most obvious feature of the campus is the multi-coloured aluminum panels arranged on the exterior of the patient towers. These panels present a 'pixilated' image of the many landscapes across Alberta – prairie, mountains, and the sky.**

## Philosophy of Wellness

The South Health Campus has been designed and built based upon a vision of supporting out-patient capacity -- keeping patients in their homes and communities, by connecting with community services as well as educating patients to optimize wellness and health promotion.

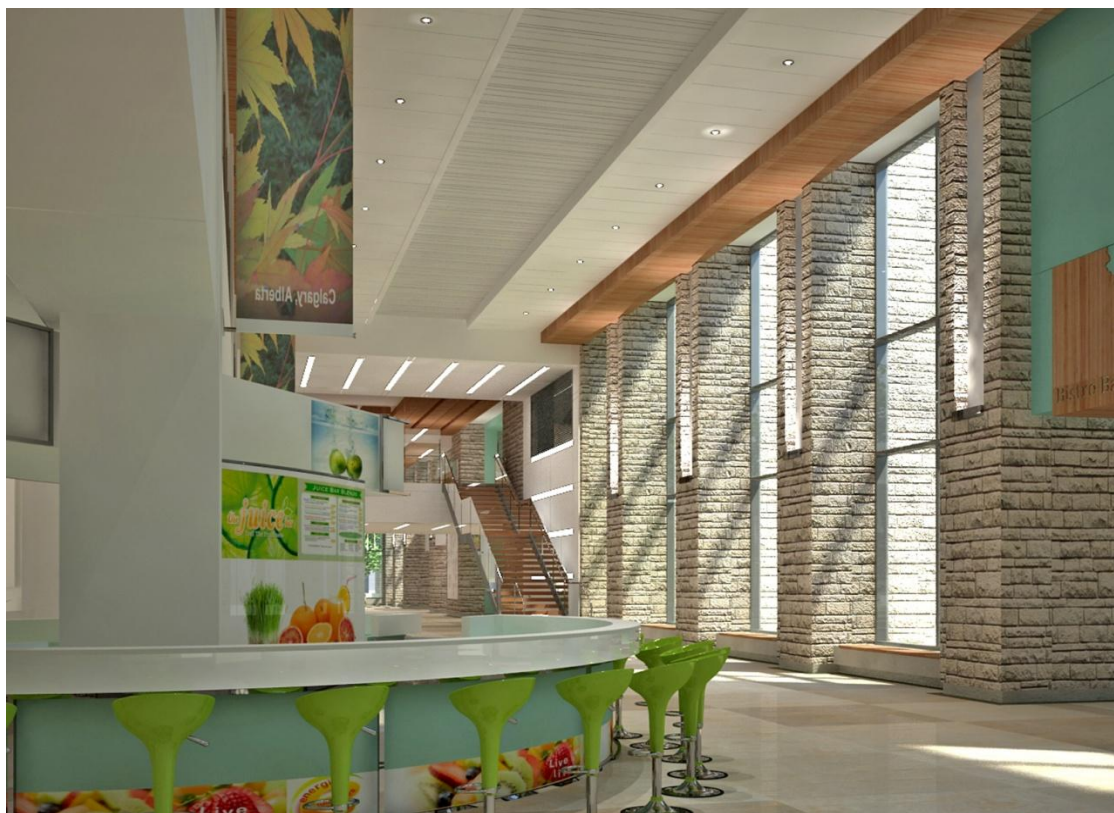
A partnership between Alberta Health Services and the community will promote life balance through a variety of programs and education events, including physical activity, healthy eating and stress control. The campus will offer access to health information and wellness resources.

The landscaping, courtyards, pathways and architecture features of the South Health Campus have also been designed to inspire healthy living, healing and wellness.

## Interesting Facts:

- 660,798m<sup>3</sup> of dirt has been removed from the site. This amounts to nearly 265 Olympic-sized swimming pools and approximately 86,947 average size dump trucks loads;
- 44 acres of land used for the project;
- Over 3,000 doors, 5,000 toilets, 55 elevators (at full build) and the best energy saving furnaces are included in the facility;
- 37,720 sheets of drywall have been used;
- As part of commitment to the environment, recycling has been incorporated into every aspect of the construction resulting in 85 percent of construction waste being diverted from landfill;
- Energy cost savings estimated at 30 to 40% over a typical hospital;
- Majority of parking below grade – 1,800 stalls.







SHC Aerial 2010



Foothills Medical Centre 1965



