

Applicability

This document applies to all health care professionals who reconstitute blood products with the Xyntha® Solufuse™ kit.

Supplies Required

Use only the supplies provided in the Xyntha® Solufuse™ kit for reconstituting the product.

Contained in Box

- Pre-filled dual-chamber syringe (Xyntha® powder in one chamber, 0.9% sodium chloride in the other chamber)
- Plunger rod for syringe

Separate Supplies

- Sterile plastic Luer lock syringe, large enough to contain dose if:
 - Combining multiple syringes.*
- Luer-to-luer connector (not included in kit) if combining multiple syringes
- Alcohol swabs



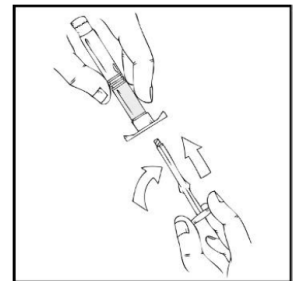
Aseptic technique must be used at all times.

The pre-filled glass syringe may not be compatible with all needleless connectors (e.g. ICU Medical MicroClave® Neurtal Connector). You may need to withdraw and administer the reconstituted product using a standard sterile plastic luer-lock syringe.

Instructions:

***Note:** Refer to Step 9 if you are reconstituting and combining multiple Xyntha® Solufuse™ syringes.

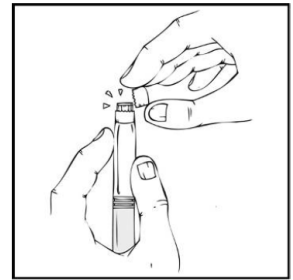
1. Allow the pre-filled dual-chamber syringe to reach room temperature.
2. Remove the contents of the Xyntha® Solufuse™ kit and place on a clean surface, making sure you have all the necessary supplies.
3. Grasp the plunger rod as shown in the diagram. Avoid contact with the shaft of the plunger rod. Screw the plunger rod firmly into the opening in the finger rest of the Xyntha® Solufuse™ by pushing and turning firmly until resistance is felt (approximately 2 turns).



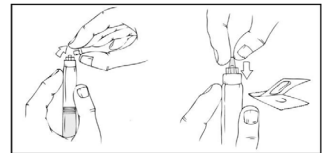
Xyntha® Solufuse™ Reconstitution Instructions

4. Holding the Xyntha® Solufuse™ upright, remove the white tamper-evident seal by bending the seal right to left (or a gentle rocking motion) to break the perforation of the cap and expose the grey rubber tip cap of the Xyntha Solufuse.

Note: Once the white tamper-evident seal is removed, keep the Xyntha® Solufuse™ upright throughout the reconstitution process to prevent possible leakage.

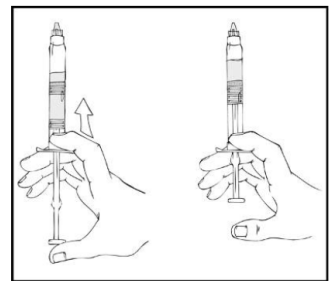


5. Remove the protective blue vented sterile cap from its package. While holding the Xyntha® Solufuse™ upright, remove the grey rubber tip cap and replaced it with the protective blue vented cap (prevents pressure build-up). Avoid touching the open end of both the syringe and the protective blue vented cap. If the protective paper is not fully sealed or if it is broken, do not use the vented sterile cap and contact Transfusion Medicine.



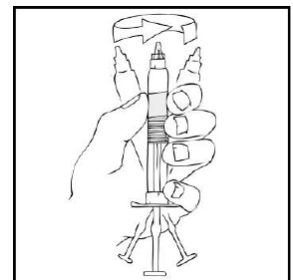
6. Gently and slowly advance the plunger rod by pushing until the two stoppers inside the Xyntha® Solufuse™ meet, and all the diluent is transferred to the chamber containing the Xyntha® powder.

Note: To prevent the escape of fluid from the tip of the syringe, push the plunger rod gently.

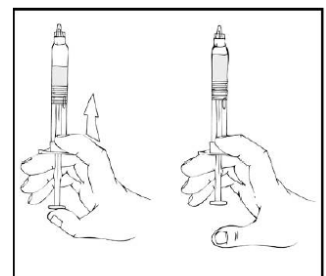


7. With the Xyntha® Solufuse™ remaining upright, swirl gently several times until the powder is dissolved.

Note: The final solution should be inspected visually for particulate matter before administration. The solution should be clear to slightly pearly and colourless. If it is not, the solution should be discarded, and a new kit should be used.



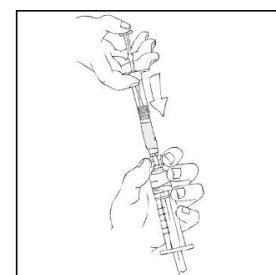
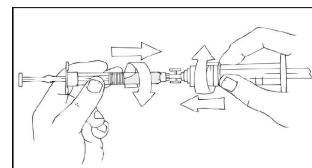
8. Again, holding the Xyntha® Solufuse™ in an upright position, slowly advance the plunger rod until most, but not all, of the air is removed from the product chamber.



**Xyntha® Solufuse™
Reconstitution Instructions**

9. To combine Solufuse™ syringes:

- Remove the luer-to-luer syringe connector from its package.
- Remove the protective blue vented cap, connect a sterile 10 cc or larger luer lock syringe to one opening (port) in the syringe connector and the Xyntha® Solufuse™ to the remaining open port on the opposite end.
- With the Xyntha® Solufuse™ on top, slowly depress the plunger rod until the contents empty into the 10 cc or larger luer lock syringe
- Remove the empty Xyntha® Solufuse™ and repeat for any additional reconstituted syringes
- Remove the luer-to-luer syringe connector from the 10 cc or larger luer lock syringe and attach an infusion set.



Note: If the solution is not used immediately, the syringe should be stored upright and the protective blue vent cap should remain on the Xyntha® Solufuse™ until ready to infuse. The reconstituted solution may be stored at room temperature prior to administration, but should be administered within 3 hours after reconstitution or removal of the grey rubber tip cap.

10. Label the syringe per the AHS [Transfusion of Blood Components and Products Policy \(PS-59\)](#).

Contact Information

For questions or comments about this document, please contact Transfusion.SafetyTeam@aplabs.ca.