

# Urine Vacutainer Tube for Culture & Sensitivity

Instructions for Healthcare Providers

Urine Vacutainer tubes are intended for the transport of urine specimens for culture and sensitivity testing of bacteria, ensuring the specimen remains stable for up to 48 hours.

## Acceptable specimen:

- Midstream urine specimen collected into a sterile container
- Refer to the [CLS Guide to Laboratory Services](#) and the following patient instruction sheet: [Mid-stream Urine Collection \(MSU\)](#)

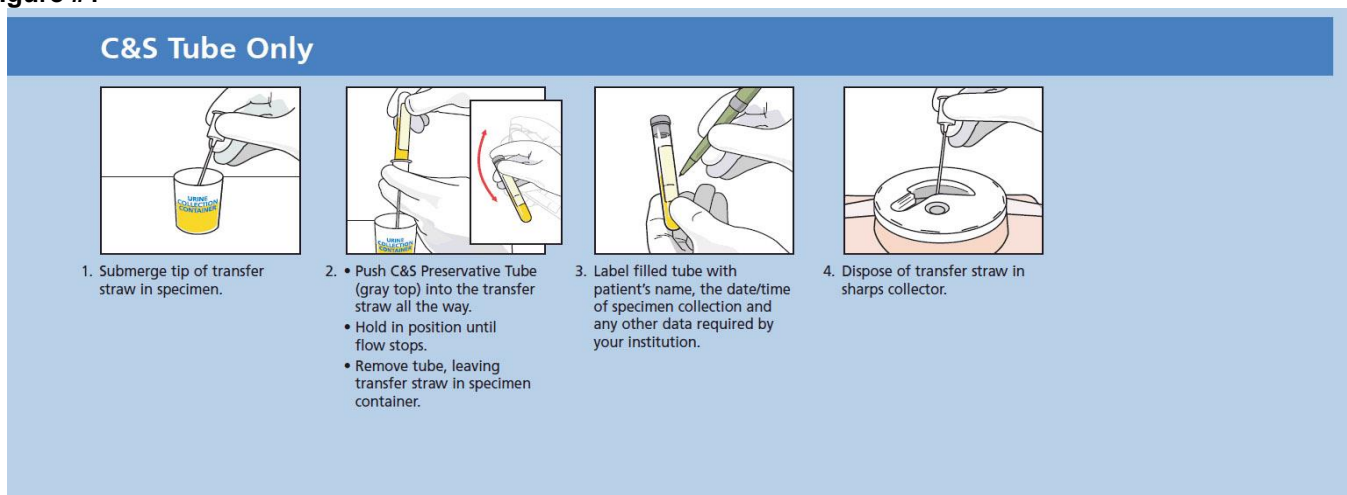
## Vacutainer Tube for culture & sensitivity:

- Used only for the transport of urine specimens for culture and sensitivity (C&S)
- A minimum volume of 5 mLs of urine is required to ensure adequate fill to the 4 mL line on the tube
- Transfer the urine from the collection container into the vacutainer tube immediately after collected. **Do not** fill tubes by pouring urine or injecting urine into the tube.
- Aliquot the mid-stream urine specimen into a grey topped urine C&S vacutainer tube using the provided transfer straw. Refer to the instructions below  
**NOTE: DO NOT** confuse the with the urine Chlamydia/GC Transport tube
- **Use Universal Precautions and appropriate Personal Protective Equipment (PPE)**

## Instructions:

1	Place sterile container with urine on a clean, flat surface.
2	Do not touch tip of transfer straw (it must remain sterile).
3	Place the tip of the transfer straw into the urine specimen ensuring the transfer straw does not touch the side of the container. See Figure #1. The container may be tipped at an angle if volume of urine is limited.
4	Push tube into the holder, stopper down. Advance the tube over the puncture point to pierce the stopper.
5	Hold tube in position until the flow stops (filled). The urine <b>MUST</b> meet the minimum fill line of 4 ml to be valid. Overfilling the transport tube will invalidate the test. Under filled tube <b>will not</b> be processed.
6	Remove tube from the holder, leaving the transfer straw in the specimen container.
7	Mix the tube 8-10 times by inversion.
8	Ensure urine vacutainer tube is correctly labeled (check labels and names with initial collection container to ensure that the correct label is applied to the aliquot).
9	Lift the transfer straw in the original container and allow specimen to drain. Discard transfer straw into biohazard container approved for sharps disposal.
10	Discard remaining urine down sink drain.

Figure #1



Source: Image adapted from Becton Dickinson (BD) Vacutainer® Collection Product Wall Chart BDPAS0026-1-CB 4/29/08

**Questions? Call the Laboratory Information Centre at 403-770-3600**