

Classification of Infectious Substances

Applicability

This document applies to all personnel of AHS Laboratory Services, the Lamont Health Centre and laboratories administered by Covenant Health.

Purpose

This document outlines the process for classifying a laboratory specimen/sample for transportation.

Classification

Should there be any question on the classification of infectious substances the consignor must consult the services of a doctor, scientist, veterinarian, epidemiologist, genetic engineer, microbiologist, pathologist, nurse, coroner, laboratory technologist (including CLXT's) or contact the Public Health Agency of Canada for assistance.

- Public Health Agency of Canada – Office of Laboratory Security
 - Phone: (613)292-6754
 - E-mail: LSD-DSL@phac-aspc.gc.ca

NOTE: As a rule of thumb, package classification should always err on the side of caution. For example, if you are questioning whether a specimen is an Exempt Human Specimen or a Category B specimen because of some information you may have, package it as a Category B.

Process

- [Appendix A - Classification of Infectious Substances Process](#)

Reference

- Laboratory Services Provincial Health and Safety Manual Sources of Truth (*To be Developed*)

Related Documents

- Transportation of Dangerous Goods Policy - <https://ahs.labqms.com/labFrame.asp?DID=24570>
- Transportation of Dangerous Goods Regulations General Information - <https://ahs.labqms.com/labFrame.asp?DID=24581>
- Transportation of Dangerous Goods Class 6.2 and 9.0 - <https://ahs.labqms.com/labFrame.asp?DID=24580>

Appendix

- [Appendix A - Classification of Infectious Substances Process](#)
- [Appendix B - Category A Infectious Substances](#)
- [Appendix C - Category B Infectious Substances](#)

Printed copies are **UNCONTROLLED** unless signed by an authorized lab personnel below.

(Authorized individuals are: lab personnel designated in their zone/program or provincial role to produce print copies)

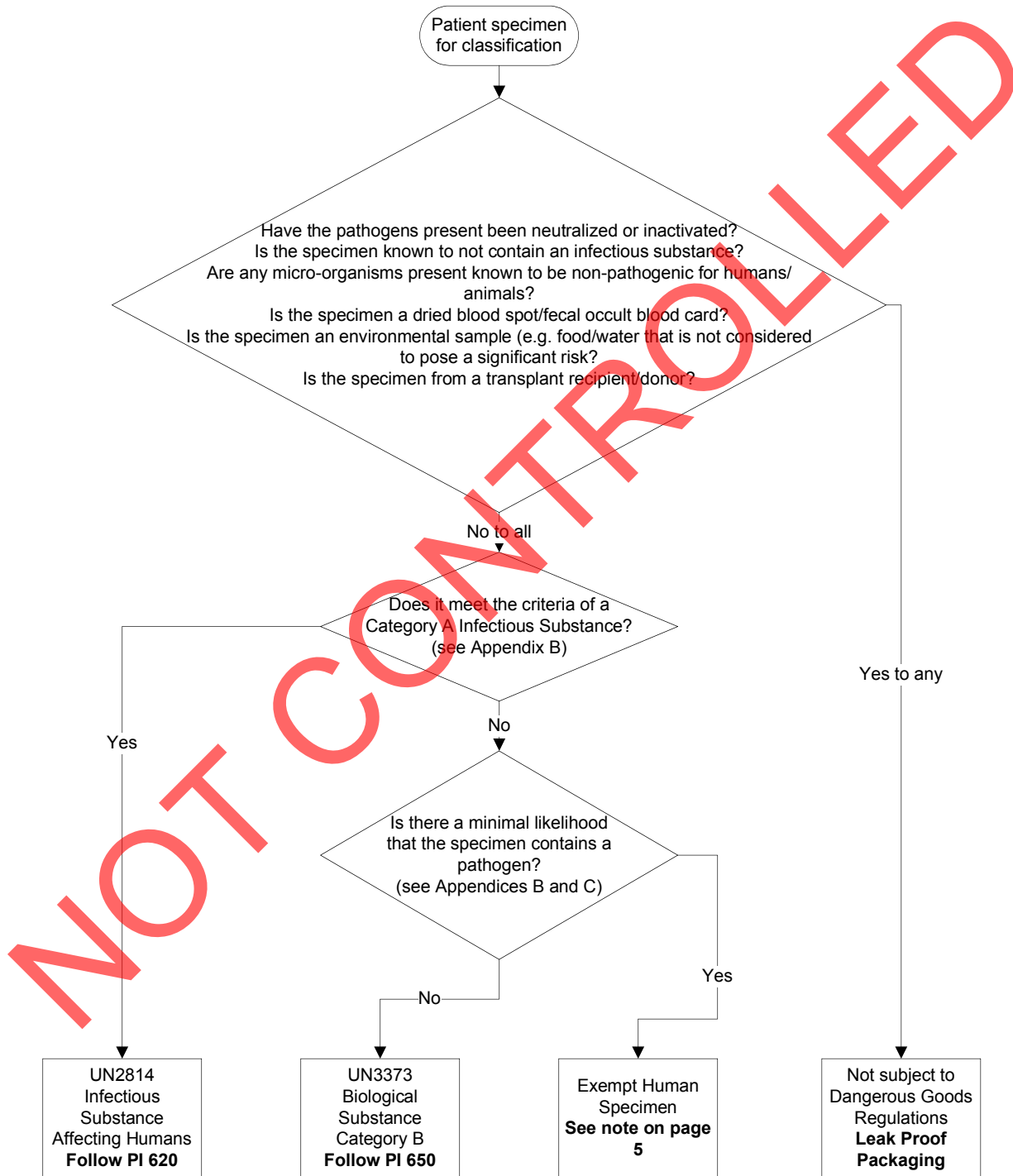
Initials:

Site:

Date Printed:

Page 1 of 18

Appendix A - Classification of Infectious Substances Process



*See" related documents" for direct links to PI 620 and PI650

Printed copies are UNCONTROLLED unless signed by an authorized lab personnel below.

(Authorized individuals are: lab personnel designated in their zone/program or provincial role to produce print copies)

Initials:

Site:

Date Printed:

Page 2 of 18

Appendix B - Category A Infectious Substances

UN2814, Category A- Viruses
 Note:

- The substances with an asterisk (*) against them in column 3 of the Category A list require an Emergency Response Assistance Plan
- These organisms are considered Category A infectious substances in cultures only. Patient specimens that contain these organisms are to be classified as Category B infectious substances. Despite this statement, the infectious substances included in Category A that are **bold** must always be handled, offered for transport, and transported as Category A.

Item	Column 1 Family	Column 2 Genus	Column 3 Species
1(1)	Arenaviridae	Arenavirus	a) Flexal virus b) Guanarito virus* c) Junin virus* d) Lassa virus* e) Machupo virus* f) Sabia virus*
2(2)	Bunyaviridae	(1) Hantavirus	a) Hantaviruses causing hemorrhagic fever with renal syndrome b) Hantaviruses causing pulmonary syndrome
		(2) Nairovirus	Crimean-Congo hemorrhagic fever virus*
		(3) Phlebovirus	Rift Valley Fever virus
3(3)	Coronaviridae	Coronavirus	Human Coronavirus – SARS, Severe Acute Respiratory Syndrome
4(4)	Filoviridae	Filovirus	a) Ebola virus* b) Marburg virus*
5(5)	Flaviviridae	Flavivirus	a) Dengue virus b) Japanese encephalitis virus c) Kyasanur Forest virus* d) Omsk hemorrhagic fever virus* e) Russian spring-summer encephalitis virus* f) Tick-borne encephalitis virus g) West Nile fever virus h) Yellow fever virus (wild type)
6(6)	Hepadnaviridae	Orthohepadnavirus	Hepatitis B virus
7(7)	Herpesviridae (Alphaherpesvirinae)	Simplexvirus	Herpes B virus*: a) Herpesvirus simiae b) Monkey B virus*
8(8)	Orthomyxoviridae	Influenzavirus A, B and C	Highly pathogenic avian influenza virus
9(9)	Paramyxoviridae	Morbillivirus	a) Hendra virus* b) Nipah virus* (Hendra-like virus)
10(10)	Picornaviridae	Enterovirus	Polioviruses
11(11)	Poxviridae	Orthopoxvirus	a) Monkeypox virus b) Variola* (smallpox virus)
12(12)	Retroviridae	Lentivirus	Human Immunodeficiency virus
13(13)	Rhabdoviridae	Lyssavirus	Rabies virus
14(14)	Togaviridae	Alphavirus	a) Eastern equine encephalitis virus b) Venezuelan equine encephalitis virus

Printed copies are UNCONTROLLED unless signed by an authorized lab personnel below.

(Authorized individuals are: lab personnel designated in their zone/program or provincial role to produce print copies)

Initials:

Site:

Date Printed:

UN2814, Category A — Bacteria Note: These micro-organisms are considered Category A infectious substances in Cultures only. Patient specimens that contain these organisms are to be classified as Category B infectious substances.

Item	Column 1 Family	Column 2 Genus	Column 3 Species
1(1)		Bacillus	anthracis
2(2)		Brucella	(a) abortus (b) melitensis (c) suis
3(3) SOR/ 2012- 245		Burkholderia	(a) mallei (formally: <i>pseudomonas mallei</i>) (Glanders) (b) pseudomallei (formally: <i>pseudomonas pseudomallei</i>)
4(4)		Chlamydia	psittaci (avian strains)
5(5)		Clostridium	botulinum
6(6)		Coccidioides	immitis
7(7)		Coxiella	burnetti
8(8)		Escherichia	coli enterotoxigenic - ETEC
9(9)		Francisella	tularensis
10(10)		Mycobacterium	tuberculosis
11(11)		Rickettsia	(a) prowazekii (b) rickettsi
12(12)		Shigella	dysenteriae (Type 1)
13(13)		Yersinia	pestis

NOT CONTROLLED

Printed copies are UNCONTROLLED unless signed by an authorized lab personnel below.

(Authorized individuals are: lab personnel designated in their zone/program or provincial role to produce print copies)

Initials:

Site:

Date Printed:

Page 4 of 18

Exempt Human/Animal Specimens¹

Defined as: Human or animal specimens for which there is minimal likelihood that pathogens are present are not subject to dangerous goods requirements and regulations **if the specimen is transported in a packaging which will prevent any leakage and which is marked with the words “EXEMPT HUMAN SPECIMEN” or “EXEMPT ANIMAL SPECIMEN”** as appropriate. Note: Some countries (eg Germany) will not allow any samples below cloven hooved animals to be shipped as “Exempt”.

¹ Currently applicable for air transport and will be applicable for other modes of transport in 2007.

NOT CONTROLLED

Printed copies are UNCONTROLLED unless signed by an authorized lab personnel below.

(Authorized individuals are: lab personnel designated in their zone/program or provincial role to produce print copies)

Initials:

Site:

Date Printed:

Page 5 of 18

Additional Criteria for Classifying Substances as Infectious Substances

For transport purposes the classification of infectious substances according to risk groups was removed from the Dangerous Goods Regulations in the 46th edition. Infectious substances are now classified as Category A or Category B. There is **no** direct relationship between Risk Groups and Category A and Category B.

If a laboratory specimen meets any of the following criteria, then it should be considered an **Infectious Substance** and packaged accordingly.

Description	Example	Category Listing	Shipping Category
1. Blood, serum, plasma and grossly bloody urine specimens from a patient known or suspected to be infected with an organism from Category A or Category B	<ul style="list-style-type: none"> Hepatitis B infection or Hepatitis B carrier status is indicated on requisition or by the physician or another healthcare worker. HIV infection or AIDS syndrome is indicated on requisition or by the physician or another healthcare worker. West Nile Virus diagnosis is indicated on requisition or by the physician or another healthcare worker. 	A	B
	<ul style="list-style-type: none"> Hepatitis C infection is indicated on requisition or by the physician or another healthcare worker 	B	B
	<ul style="list-style-type: none"> Sputum samples from smear positive or chest X-ray positive patients. Sputum samples querying tuberculosis or similar comments on the requisition. 	A	B
Specimens from patients diagnosed with Tuberculosis.	<ul style="list-style-type: none"> TB culture sent from one microbiology laboratory to reference laboratory for further testing 	A	A
	<ul style="list-style-type: none"> Cerebral Spinal Fluid (CSF) samples Blood, serum and plasma specimens Brain tissue 	B	B
Specimens from patients	<ul style="list-style-type: none"> Stool samples only 	B	B

Printed copies are UNCONTROLLED unless signed by an authorized lab personnel below.

(Authorized individuals are: lab personnel designated in their zone/program or provincial role to produce print copies)

Initials:

Site:

Date Printed:

Page 6 of 18

diagnosed with Cholera or Typhoid Fever			
Specimens from patients diagnosed with Diphtheria	<ul style="list-style-type: none"> Throat swab only 	B	B
Specimens to be tested for HIV or Hepatitis B, as confirmatory testing	<ul style="list-style-type: none"> HIV antibody- Provincial Laboratory Requisition Box F is checked Hepatitis B antigen when Hepatitis B surface antigen is positive HIV viral load HIV p24 core antigen HIV lymphocyte subsets 	A	B
All specimens when the requisition indicates	<ul style="list-style-type: none"> Ship as Dangerous Goods 	Contact physician to request additional information (i.e. RISK GROUP or Category) Risk Group Codes (RG2 or RG3, etc.)	

NOT CONTROLLED

Printed copies are UNCONTROLLED unless signed by an authorized lab personnel below.

(Authorized individuals are: lab personnel designated in their zone/program or provincial role to produce print copies)

Initials:

Site:

Date Printed:

Appendix C - Category B Infectious Substances

UN3373, Category B- Virus

Note:

- If the symbol "@" appears beside an infectious substance listed in one of the following categories, that infectious substance affects animals only. The UN number and shipping name are UN2900, INFECTIOUS SUBSTANCE, AFFECTING ANIMALS.

Item	Column 1 Family	Column 2 Genus	Column 3 Species
1(1)	Adenoviridae	(1) Aviadenovirus (2) Mastadenovirus	Animal, all isolates@ (a) Adenovirus (human, all types) (b) Animal, all isolates@
2(2)	Arenaviridae	Arenavirus	(a) Lymphocytic choriomeningitis virus (b) Mopeia virus (c) Tacaribe viruses (d) Whitewater Arroyo virus
3(3)	Arteviridae	Arterivirus	(a) Equine arteritis virus@ (b) Porcine reproductive/Respiratory syndrome virus@ (c) Simian hemorrhagic fever virus
4(4)	Astroviridae	Astrovirus	All serotypes
5(5)	Birnaviridae	Birnavirus	(a) Infectious bursal disease virus@ (b) Infectious pancreatic necrosis virus@
6(6)	Bornaviridae	Bornavirus	Borna disease virus (CNS-encephalomyelitis)
7(7)	Bunyaviridae	(1) Bunyavirus (2) Hantavirus (3) Nairovirus (4) Phlebovirus	(a) Aino virus@ (b) Akabane virus@ (c) Bunyamwera virus (d) California encephalitis virus (e) Jamestown Canyon virus (f) La Crosse virus (g) Lumbo virus (h) Oropouche virus (i) Snowshoe hare virus (j) Tahyna virus (a) Hantaviruses not causing pulmonary syndrome (b) Hantaviruses not causing hemorrhagic fever with renal syndrome (a) Hazara virus (b) Nairobi sheep disease virus@ (a) All species except Rift Valley fever virus (b) Toscana virus
8(8)	Caliciviridae	Calicivirus	(a) European brown hare virus@ (b) Feline calicivirus@ (c) Hepatitis E virus (d) Norwalk virus (e) Rabbit hemorrhagic disease virus@ (f) San Miguel sea lion virus@ (g) Vesicular exanthema of swine virus
9(9)	Circoviridae	Circovirus	(a) Avian circovirus@ (b) Porcine circovirus@
10(10)	Coronaviridae	(1) Coronavirus	(a) Avian infectious bronchitis virus (b) Bovine coronavirus, all strains (c) Canine, Rat and Rabbit coronavirus (d) Feline enteric coronavirus@ (e) Feline infectious peritonitis virus (f) Hemagglutinating encephalomyelitis virus of swine (g) Human coronavirus, all strains excluding SARS

Printed copies are UNCONTROLLED unless signed by an authorized lab personnel below.

(Authorized individuals are: lab personnel designated in their zone/program or provincial role to produce print copies)

Initials:

Site:

Date Printed:

Page 8 of 18

			(h) Mouse hepatitis virus@ (i) Porcine epidemic diarrhea virus@ (j) Porcine respiratory coronavirus@ (k) Transmissible gastroenteritis virus of swine@ (l) Turkeys enteritis coronavirus@
		(2) Torovirus	(a) Berne virus@ (b) Breda virus@
11(11)	Flaviviridae	(1) Flavivirus	(a) Kunjin virus (b) Louping ill virus (c) Murray Valley encephalitis virus (Australia encephalitis) (d) Powassan virus (e) Rocio virus (f) St. Louis encephalitis virus (g) Turkey meningoencephalitis virus (h) Wesselsbron virus (i) Yellow fever virus (vaccine strain 17D)
		(2) Hepacivirus	Hepatitis C virus
		(3) Pestivirus	(a) Bovine viral diarrhea virus@ (b) Border disease virus@
12(12)	Hepadnaviridae	(1) Delta virus	Hepatitis D (Delta) virus
		(2) Avihepadna-virus	Duck hepatitis B virus@
		(3) Orthohepadna-virus	(a) Ground squirrel hepatitis B virus (b) Woodchuck hepatitis virus@
13(13)	Herpesviridae (Alphaherpesvirinae)	(1) Simplexvirus	(a) Human herpes virus 1 (b) Human herpes virus 2 (c) Mammillitis virus (bovine herpes-virus 2)@
		(2) Varicellovirus	(a) All isolates, excluding pseudorabies virus (b) Bovine infectious rhinotracheitis (herpesvirus 1) (c) Equine abortion virus (equine herpesvirus 1)@ (d) Equine coital exanthema virus (equine herpesvirus 3)@ (e) Equine rhinopneumonitis (equine herpesvirus 4)@ (f) Feline rhinotracheitis (feline herpesvirus 1)@ (g) Human herpes virus 3 (Varicella-zoster virus) (h) Pseudorabies virus (suis herpes virus 1)
		(3) Unclassified	(a) Canine herpesvirus 1@ (b) Caprine herpesvirus 1@ (c) Cervid herpesvirus 1 and 2@
14(14)	Herpesviridae (Betaherpesvirinae)	(1) Cytomegalovirus	(a) Human cytomegalovirus (CMV) (b) Porcine cytomegalovirus (suid herpesvirus 2)@
		(2) Muromegalovirus	Caviid herpesvirus (guinea-pig cytomegalovirus)@
		(3) Roseolovirus	Equine cytomegalovirus (equine herpesvirus2)@
15(15)	Herpesviridae (Gammaherpesvirinae)	(1) Lymphocrypto-virus	(a) Epstein-Barr-like virus (EBV) (Monkey virus) (b) Epstein-Barr virus (EBV) (Human herpes-virus 4) (c) Human B lymphotropic virus
		(2) Rhadinovirus	(a) Herpesvirus ateles (b) Herpesvirus saimiri (c) Malignant catarrhal fever virus (Alcelaphine herpesvirus)@
16(16)	Orthomyxoviridae	Influenzavirus A, B and C	Influenza A, B, C and all isolates except influenza A – avian H5 and H7, Human H2 and 1918 H1N1 Spanish Flu strain
17(17)	Paramyxoviridae	Pneumovirus	Turkey rhinotracheitis virus@
18(18)	Paramyxoviridae (subfamily)	(1) Morbillivirus	(a) Canine distemper virus@ (b) Measles virus

Printed copies are UNCONTROLLED unless signed by an authorized lab personnel below.

(Authorized individuals are: lab personnel designated in their zone/program or provincial role to produce print copies)

Initials:

Site:

Date Printed:

Page 9 of 18

	Paramyxovirinae)		(c) Phocine distemper virus@
		(2) Paramyxovirus	Parainfluenza types 1-4
		(3) Respirivirus	(a) Bovine Parainfluenza virus Type 3@ (b) Sendai virus (mouse para-influenza virus)@
		(4) Rubulavirus	(a) Avian paramyxovirus Types 2-9@ (b) Mumps virus
19(19)	Paramyxoviridae (subfamily Pneumovirinae)	Pneumovirus	(a) Bovine respiratory syncytial virus@ (b) Human respiratory syncytial virus (c) Pneumonia virus of mice@
20(20)	Parvoviridae	Parvovirus	All isolates@
21(21)	Picornaviridae	(1) Cardiovirus	(a) All isolates (human) (b) Swine encephalomyocarditis virus@ (c) Theiler's murine poliovirus
		(2) Enterovirus	(a) All isolates@, excluding Swine vesicular disease virus and Polioviruses (b) Coxsackieviruses
		(3) Hepatovirus	All isolates (including Hepatitis A, human enterovirus type 72)
		(4) Rhinovirus	(a) All isolates (human) (b) Bovine rhinovirus Types 1-3@ (c) Equine rhinovirus@ (d) Feline Rhinovirus@ (e) Rhinovirus
22(22)	Poxviridae	(1) Avipoxvirus	(a) All isolates (animal)@ (b) All isolates (human)
		(2) Leporipoxvirus	(a) Rabbit (Shope) fibroma virus@ (b) Squirrel fibroma virus@
		(3) Orthopoxvirus	(a) All isolates@, excluding Monkeypox and Variola (smallpox) virus (b) Buffalo pox (c) Cowpox virus (d) Rabbit pox (e) Skunkpox (f) Vaccinia
		(4) Parapoxvirus	(a) All isolates@, excluding Sealpox virus (b) Bovine papular stomatitis virus (c) Orf virus (d) Pseudocowpox virus (paravaccinia) (e) Sealpox virus
		(5) Suipoxvirus	Swinepox
		(6) Yatapoxvirus	Tanapoxvirus
23(23)	Reoviridae	(1) Coltivirus	Coltivirus
		(2) Orbivirus	(a) Epizootic hemorrhagic disease virus@ (b) Equine encephalosis virus@ (c) Ibaraki virus@ (d) Palyam virus@
		(3) Orthoreovirus	(a) Animal, all isolates, except Ndelle and Ourem viruses (b) Types 1, 2 and 3
		(4) Reovirus, types 1 and 2	Animal, all isolates@
		(5) Rotavirus	(a) Animal, all isolates@ (b) Rotavirus
24(24)	Retroviridae	(1) Betaretrovirus	Mason-pfizer monkey virus
		(2) Gammaretrovirus	(a) Animal, all isolates@ (b) Avian reticuloendotheliosis virus
		(3) Deltaretrovirus	Human T-cell lymphotropic viruses (HTLV)
25(25)	Retroviridae (subfamily Spumavirinae)	(1) Spumavirus	All isolates
		(2) Deltaretrovirus	Bovine leukemia virus
26(26)	Rhabdoviridae	(1) Lyssavirus	(a) Australian bat lyssavirus (b) Duvenhage virus (c) European bat lyssavirus I (d) European bat lyssavirus II (e) Lagos bat virus (f) Mokola virus

Printed copies are UNCONTROLLED unless signed by an authorized lab personnel below.

(Authorized individuals are: lab personnel designated in their zone/program or provincial role to produce print copies)

Initials:

Site:

Date Printed:

Page 10 of 18

			(g) Rabies virus- Fixed virus
		(2) Vesiculovirus	(a) Alagoas virus (b) Chandipura virus (c) Cocal virus (d) Isfahan virus (e) Pyri virus (f) Vesicular stomatitis virus — Indiana lab strain
27(27)	Togaviridae	(1) Alphavirus	(a) Bebaru virus (b) Chikungunya virus (c) Everglades virus (d) Getah virus (e) Highlands J virus (f) Mayaro virus (g) Mucambo virus (h) Ndumu virus (i) O’Nyong-Nyong virus (j) Ross River virus (k) Semliki forest virus (l) Sindbis (m) Tonate virus (n) Western equine encephalitis virus strain TC-83
		(2) Arterivirus	Equine arteritis virus@
		(3) Pestivirus	Bovine disease virus
		(4) Rubivirus	Rubella virus
28(28)	Transmissible Spongiform Encephalopathies		(a) Bovine spongiform encephalopathy (b) Chronic wasting disease of captive mule deer/elk@ (c) Creutzfeldt-Jacob disease (d) Gertsman-Straussler-Scheinker (e) Kuru (f) Scrapie@ (g) Transmissible mink encephalopathy@
29(29)	Unclassified	Unclassified	Swine hepatitis E virus@

NOT CONTROLLED

Printed copies are UNCONTROLLED unless signed by an authorized lab personnel below.

(Authorized individuals are: lab personnel designated in their zone/program or provincial role to produce print copies)

Initials:

Site:

Date Printed:

Page 11 of 18

UN3373, Category B- Bacteria
Note:

- If the symbol "@" appears beside an infectious substance listed in one of the following categories, that infectious substance affects animals only. The UN number and shipping name are UN2900, INFECTIOUS SUBSTANCE, AFFECTING ANIMALS.

Item	Column 1 Genus	Column 2 Species
1(1)	Acholeplasma	oculi@
2(2)	Acinetobacter	(a) baumannii (b) calcoaceticus (c) lwoffii (d) spp
3(3)	Actinobacillus	(a) actinomycetemcomitans (b) capsulatus@ (c) equuli@ (d) lignieresii@ (e) pleuropneumoniae@ (f) seminis@ (g) spp (h) suis@ (i) ureae@
4(4)	Actinomadura	(a) madurae (b) pelletieri
5(5)	Actinomyces	(a) bovis@ (b) gerencseriae (c) hordeovulneris@ (d) israelii (e) naeslundii (f) pyogenes (g) spp (h) suis@ (i) viscosus@
6(6)	Aeromonas	(a) hydrophila (b) punctata (c) spp
7(7)	Afipia	Spp
8(8)	Agrobacterium	radiobacter
9(9)	Alcaligenes	spp
10(10)	Amycolata	Autotrophica
11(11)	Anaplasma	(a) caudatum@ (b) centrale@ (c) marginale@ (d) ovis@
12(12)	Arcanobacterium	(a) haemolyticum (b) pyogenes
13(13)	Arcobacter	(a) butzeri (b) cryoaerophilus (c) spp
14(14)	Arizona	spp
15(15)	Bacillus	cereus
16(16)	Bacteroides	(a) fragilis (b) heparinolyticus@ (c) levii (d) salivovus@ (e) spp
17(17)	Bartonella	(a) bacilliformis (b) elizabethae (c) henselae (d) quintana (e) spp
18(18)	Bordetella	(a) avium@ (b) bronchiseptica

Printed copies are UNCONTROLLED unless signed by an authorized lab personnel below.

(Authorized individuals are: lab personnel designated in their zone/program or provincial role to produce print copies)

Initials:

Site:

Date Printed:

Page 12 of 18

		(c) paraptussis (d) pertussis (e) spp
19(19)	Borrelia	(a) burgdorferi (b) duttonii (c) recurrentis (d) spp (e) vincenti
20(20)	Brachyspira	(a) hyodysenteriae (b) innocens
21(21)	Brucella	(a) canis (b) ovis (c) spp, excluding abortus, melitensis and suis
22(22)	Burkholderia	(a) cepacia genomovars I (b) cepacia genomovars III (c) gladioli (d) multivorans (e) spp, excluding mallei and pseudomallei (f) stabilis (g) vietnamensis
23(23)	Campylobacter	(a) coli (b) fetus, subspecies fetus (intestinalis) (c) fetus, subspecies venerealis (d) hyointestinalis (e) jejuni (f) lari (g) mucosalis@ (h) spp (i) sputorum
24(24)	Capnocytophaga	spp
25(25)	Cardiobacterium	hominis
26(26)	Chlamydia	(a) pneumoniae (b) psittaci (non-avian strains) (c) trachomatis
27(27)	Chryseobacterium	meningosepticum
28(28)	Citrobacter	(a) diversus (b) freundii (c) spp
29(29)	Clostridium	(a) chauvoei (b) colinum@ (c) difficile (d) haemolyticum (e) histolyticum (f) novyi (g) perfringens (h) septicum (i) sordellii (j) spiriforme@ (k) spp, excluding botulinum (l) tetani (m) villosum@
30(30)	Corynebacterium	(a) amycolatum (b) cystitidis@ (c) diphtheriae (d) jeikeium (e) kutscheri@ (f) minutissimum (g) pilosum (h) pseudotuberculosis (i) renale (j) spp (k) ulcerans
31(31)	Dietzia	maris
32(32)	Dermabacter	hominis
33(33)	Dermatophilus	congolensis
34(34)	Dichelobacter	nodosus

Printed copies are UNCONTROLLED unless signed by an authorized lab personnel below.

(Authorized individuals are: lab personnel designated in their zone/program or provincial role to produce print copies)

Initials:

Site:

Date Printed:

Page 13 of 18

35(35)	Edwardsiella	tarda
36(36)	Eikenella	corrodens
37(37)	Enterobacter	(a) aerogenes/cloacae (b) spp
38(38)	Enterococcus	(a) faecalis (b) faecium (c) spp
39 (39)	Ehrlichia	(a) sennetsu (b) spp
40(40)	Erysipelothrix	tonsillarum
41(41)	Escherichia	(a) coli (b) coli enteroinvasive — EIEC (c) coli enteropathogenic — EPEC
42(42)	Eubacterium	suis@
43(43)	Fluoribacter	bozemaniae
44(44)	Francisella	(a) novicida (b) philomiragia
45(45)	Fusobacterium	(a) necrophorum (b) spp
46(46)	Gardnerella	vaginalis
47(47)	Gordonia	spp
48(48)	Haemophilus	(a) ducreyi (b) influenzae (c) influenzaemurium@ (d) paragallinarum (e) parainfluenzae (f) parasuis@ (g) piscium@ (h) somnus@ (i) spp
49(49)	Helicobacter	(a) cinaedi (b) felis@ (c) fennelliae (d) mustelae (e) nemestrinae (f) pullorum (g) pylori
50(50)	Hemobartonella	felis@
51(51)	Kingella	kingae
52(52)	Klebsiella	(a) granulomatis (b) oxytoca (c) pneumoniae (d) spp
53(53)	Lactococcus	garvieae
54(54)	Lawsonia	intracellularis@
55(55)	Legionella	(a) micdadei (b) pneumophila (c) spp
56(56)	Leptospira	(a) bratislava (b) canicola/copenhageni (c) grippityphosa (d) hardjo (e) icterohaemorrhagiae (f) interrogans (g) pomona (h) sejroe (i) var ballum
57(57)	Listeria	(a) ivanovii@ (b) monocytogenes (c) spp
58(58)	Mannheimia	haemolytica
59(59)	Moraxella	(a) bovis@ (b) caprae (c) catarrhalis (d) lacunata

Printed copies are UNCONTROLLED unless signed by an authorized lab personnel below.

(Authorized individuals are: lab personnel designated in their zone/program or provincial role to produce print copies)

Initials:

Site:

Date Printed:

Page 14 of 18

		(e) phenylpyruvica (f) spp
60(60)	Morganella	morganii
61(61)	Mycobacterium	(a) africanum (b) asiaticum (c) avium complex (d) avium/intracellulare (e) bovis (f) bovis (BCG) (g) chelonae (h) fortuitum (i) kansasii (j) leprae (k) malmoeense (l) marinum (m) microti (n) paratuberculosis (o) scrofulaceum (p) simiae (q) szulgai (r) ulcerans (s) xenopi
62(62)	Mycoplasma	(a) caviae (b) hominis (c) pneumoniae (d) spp, excluding mycoides
63(63)	Neisseria	(a) elongata (b) gonorrhoeae (c) meningitidis (d) spp
64(64)	Neorickettsia	helminthoeca@
65(65)	Nocardia	(a) asteroides (b) brasiliensis (c) caviae (d) farcinica (e) nova (f) otitidis-caviarum (g) pseudobrasiliensis (h) spp (i) transvalensis
66(66)	Ochrobactrum	spp
67(67)	Oligella	spp
68(68)	Ornithobacterium	rhinotracheale@
69(69)	Pandoraea	spp
70(70)	Pantoea	agglomerans
71(71)	Pasteurella	(a) aerogenes (b) anatipestifer@ (c) caballi@ (d) canis (e) dagmatis (f) granulomatis@ (g) haemolytica (h) multocida (serotypes B:2 and E:2) (i) multocida, (except serotypes B:2 and E:2) (j) multocida, subspecies gallicida (k) multocida, subspecies multocida (l) multocida, subspecies septica (m) pneumotropica (n) spp
72(72)	Peptostreptococcus	(a) anaerobius (b) indolicus@ (c) spp
73(73)	Plesiomonas	shigelloides
74(74)	Porphyromonas	spp
75(75)	Prevotella	(a) melaninogenica (b) spp

Printed copies are UNCONTROLLED unless signed by an authorized lab personnel below.

(Authorized individuals are: lab personnel designated in their zone/program or provincial role to produce print copies)

Initials:

Site:

Date Printed:

Page 15 of 18

76(76)	Propionibacterium	propionicum
77(77)	Proteus	(a) mirabilis (b) penneri (c) spp (d) vulgaris
78(78)	Providencia	(a) alcalifaciens (b) rettgeri (c) spp
79(79)	Psychrobacter	(a) immobilis (b) phenylpyruvicus
80(80)	Pseudomonas	(a) aeruginosa (b) spp
81(81)	Ralstonia	spp
82(82)	Rhodococcus	(a) equi (b) spp
83(83)	Rickettsia	(a) akari (b) australis (c) canadensis (d) conorii (e) helvetica (f) montanensis (g) parkeri (h) rhipicephali (i) spp, excluding prowazekii and rickettsi (j) tsutsugamuchi (k) typhi (mooseri)
84(84)	Rothia	(a) dentocariosa (b) mucilaginosus
85(85)	Salmonella	(a) abortus equi (b) abortus ovis (c) agona (d) anatum (e) arizonae (f) choleraesuis (g) derby (h) dublin (i) enteritidis (j) gallinarum@ (k) heidelberg (l) montevideo (m) newport (n) (other serovars) (o) paratyphi A, B and C (p) pullorum@ (q) spp (r) typhi (s) typhimurium (t) typhisuis@
86(86)	Serpulina	spp
87(87)	Serratia	(a) liquefaciens (b) marcescens
88(88)	Shigella	(a) boydii (b) dysenteriae (other than Type 1) (c) flexneri (d) sonnei
89(89)	Staphylococcus	(a) aureus (b) aureus (MRSA) (c) epidermidis (d) intermedius@
90(90)	Stenotrophomonas	maltophilia
91(91)	Streptobacillus	(a) moniliformis (b) spp
92(92)	Streptococcus	(a) agalactiae (b) bovis (c) dysgalactiae (d) equi

Printed copies are UNCONTROLLED unless signed by an authorized lab personnel below.

(Authorized individuals are: lab personnel designated in their zone/program or provincial role to produce print copies)

Initials:

Site:

Date Printed:

Page 16 of 18

		(e) pneumoniae (f) pyogenes (g) spp (h) suis (i) uberis
93(93)	Taylorella	equigenitalis@
94(94)	Treponema	(a) carateum (b) pallidum (c) pertenu (d) spp (e) vincentii
95(95)	Tsukamurella	spp
96(96)	Ureaplasma	urealyticum
97(97)	Vagococcus	salmoninarum@
98(98)	Vibrio	(a) cholerae (b) parahaemolyticus (c) spp (d) vulnificus
99(99)	Yersinia	(a) enterocolitica (b) pseudotuberculosis (c) ruckeri@

NOT CONTROLLED

Printed copies are UNCONTROLLED unless signed by an authorized lab personnel below.

(Authorized individuals are: lab personnel designated in their zone/program or provincial role to produce print copies)

Initials:

Site:

Date Printed:

Page 17 of 18

UN3373, Category B- Fungi		
Item	Column 1 Genus	Column 2 Species
1(1)	Aspergillus	(a) flavus (b) fumigatus (c) nidulans (d) niger (e) oryzae (f) terreus
2(2)	Blastomyces	dermatitidis (formerly: <i>Ajellomyces dermatitidis</i>)
3(3)	Candida	(a) albicans (b) glabrata (c) guilliermondii (d) krusei (e) parapsilosis
4(4)	Cladophialophora	bantiana (formerly: <i>Cladosporium bantianum</i>)
5(5)	Cladosporium	carrionii
6(6)	Cryptococcus	neoformans
7(7)	Emmonsia	parva
8(8)	Epidermophyton	floccosum
9(9)	Histoplasma	(a) capsulatum (formerly: <i>Ajellomyces capsulatum</i>) (b) capsulatum var capsulatum (c) capsulatum var duboisii (d) capsulatum var farciminosum
10(10)	Loboa	loboi
11(11)	Microsporium	(a) audouinii (b) canis (c) distortum (d) equinum (e) ferrugineum (f) fulvum (g) gypseum (h) nanum (i) persicolor (j) praecox (k) vanbreuseghemii
12(12)	Paracoccidioides	brasiliensis
13(13)	Penicillium	marneffeii
14(14)	Sporothrix	(a) Schenckii var luriei (b) Schenckii var schenckii
15(15)	Trichophyton	(a) concentricum (b) equinum/autotrophicum (c) equinum/equinum (d) gourvilii (e) megninii (f) mentagrophytes/erinacei (g) mentagrophytes/interdigitale (h) mentagrophytes/nodulare (i) mentagrophytes/ mentagrophytes (j) mentagrophytes/quinkeanum (k) rubrum (l) schoenleinii (m) simii (n) sudanese (o) tonsurans (p) violaceum (q) yaoundei

Printed copies are UNCONTROLLED unless signed by an authorized lab personnel below.

(Authorized individuals are: lab personnel designated in their zone/program or provincial role to produce print copies)

Initials:

Site:

Date Printed:

Page 18 of 18