

## Nuwiq® Reconstitution

\*\*\* IMPORTANT \*\*\*

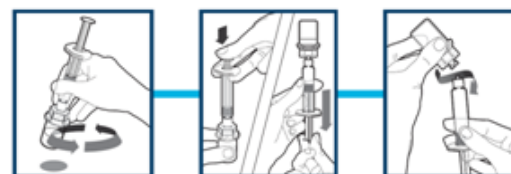
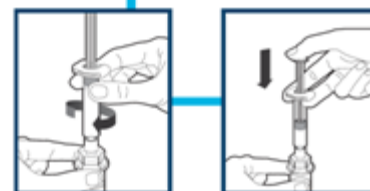
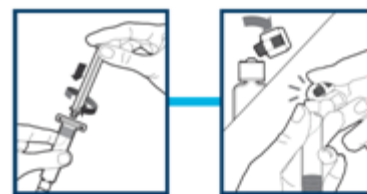
Aseptic techniques must be used at all times. Use the diluent supplied in the package.

### PREPARATION

- If refrigerated, allow vials and diluent-filled syringe to come to room temperature (15-30 oC)
- Check expiry dates
- Wash your hands and ensure area is clean
- **ENSURE YOU HAVE EVERYTHING REQUIRED FOR YOUR DOSE:**  
Vials – Diluent pre-filled syringes – Vial adapters – Alcohol wipes – Infusion set – Tourniquet – Cotton wipes – Luer-lock syringe (if needed for doses of more than one vial)

### RECONSTITUTION

- Remove plastic cap from medication vial(s)
- Wipe top of the vial with alcohol swab; allow to dry
- Peel lid back on vial adapter package
- On a flat surface, place vial adapter over vial and push down, so that spike punctures center of the rubber stopper on the vial
- Only use the diluent syringe in the package
- Attach plunger rod to the diluent syringe by inserting the rod into the syringe and turning clockwise
- Hold syringe with cap pointing up; snap off cap with other hand
- Turn syringe down; insert tip into adapter opening on vial; turn clockwise to attach
- Slowly push down on plunger of syringe to inject the diluent into the vial
- Swirl vial gently to dissolve the product; do not shake
- Do not use the reconstituted product if it is cloudy or contains visible particles
- Turn vials upside down, slowly pull plunger rod to draw solution into syringe
- Unscrew the syringe from the vial adapter
- Infuse product as instructed by authorized prescriber



### Need more than one vial for each dose?

- Prepare all vials and diluent syringes needed for your dose
- Remove diluent syringes from each vial
- Use a separate luer-lock syringe, large enough to contain full dose, to draw contents from each vial
- Infuse product as instructed by authorized prescriber

NOTE: The pre-filled glass syringe with diluent used to reconstitute and administer product **may not be compatible with all needless connectors for intravenous catheters** (e.g. ICU Medical MicroClave® Neutral Connector). You may need to withdraw reconstituted product into a sterile 10 mL plastic syringe with a standard luer-lock connector.