

Proven Ethylene Glycol (EG) Ingestion (Refer to Appendix 1)

The following protocol assumes that one initial EG level has been performed.

No hemodialysis:

- Less than 3 mmol/L then no further analysis necessary.
- Greater than 3 mmol/L, treated with fomepizole or ethanol then repeat EG Q12h until level is less than 3 mmol, then no further EG levels necessary

With hemodialysis:

- One level 2 hours before the end of dialysis cycle (duration of run to be determined by nephrologist).
- Once level is less than 3 mmol/L, no further EG levels necessary.

Proven Methanol (MeOH) Ingestion (Refer to Appendix 1)

The following protocol assumes that one initial MeOH level has been performed.

No hemodialysis:

- Less than 6 mmol/L then no further analysis necessary
- Greater than 6 mmol/L, treated with fomepizole or ethanol then repeat MeOH Q12h until level is less than 6 mmol/L, then no further MeOH levels necessary.

With hemodialysis:

- One level 2 hours before the end of dialysis cycle (duration of run to be determined by nephrologist).
- Once level is less than 6 mmol/L, no further MeOH levels necessary.

Notes

Requests for levels that do not fall within these guidelines are to be discussed between the clinical biochemist (403-944-3993) or general pathologist on call (403-860-1802) and the ordering physician. The laboratory is responsible for contacting the ordering physician.

References

1. Barceloux DG et al. American Academy of Clinical Toxicology practice guidelines on the treatment of methanol poisoning. J Toxicol Clin Toxicol 2002;40: 415-46.
2. Barceloux DG et al. American Academy of Clinical Toxicology practice guidelines on the treatment of ethylene glycol poisoning. J Toxicol Clin Toxicol 1999;37:537-60
3. Brent J. Fomepizole for methanol and ethylene glycol poisoning. N Engl J Med 2009;360:2216-2223
4. Brent J et al. Fomepizole for the treatment of ethylene glycol poisoning, N Engl J Med 1999;340:832-8.
5. Brent J et al. Fomepizole for the treatment of methanol poisoning. N Engl J Med 2001;344:424-9.

Appendix 1 Guidelines for Laboratory Testing of Ethylene Glycol and Methanol

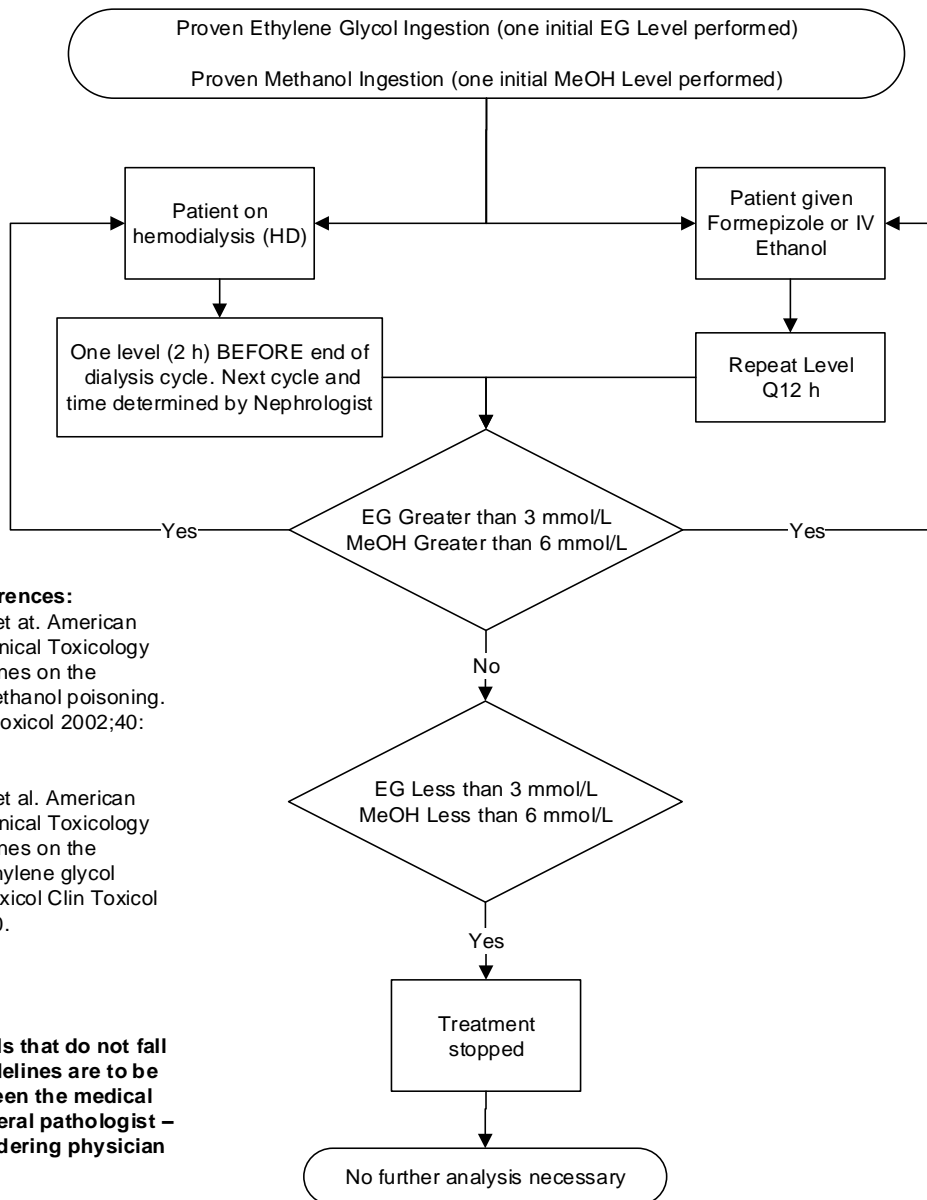
Recommendations:

- Do not post this guideline in your work area
- Attach this guideline to the patient's chart.

Disclaimer:

This guideline has been prepared for informational purposes to employees of organizations to whom PADIS provides poison centre services and APL provides testing services. Alberta Health Services accepts no responsibility for any modification or redistribution of this guideline and is not liable for any actions taken by individuals based on the information provided, or for any inaccuracies, errors, or omissions in the information in this guideline.

Copyright: © 2014 Alberta Health Services. All rights reserved in relation to this guideline. Without limiting the reservation of copyright, no person shall reproduce, store in a retrieval system or transmit in any form or by any means (electronic, mechanical, photocopying, recording or otherwise) part or the whole of this guideline without the prior written permission of Alberta Health Services. Requests for Alberta Health Services' permission to reproduce any part of this publication should be addressed to Dr. Mark Yarema, Medical Director, PADIS and Dr. Hossein Sadrzadeh, Clinical Section Head, Chemistry, Alberta Precision Laboratories.



References:

Barceloux DG et al. American Academy of Clinical Toxicology practice guidelines on the treatment of methanol poisoning. J Toxicol Clin Toxicol 2002;40: 415-46.

Barceloux DG et al. American Academy of Clinical Toxicology practice guidelines on the treatment of ethylene glycol poisoning. J Toxicol Clin Toxicol 1999;37:537-60.

Requests for levels that do not fall within these guidelines are to be discussed between the medical biochemist or general pathologist – on call and the ordering physician