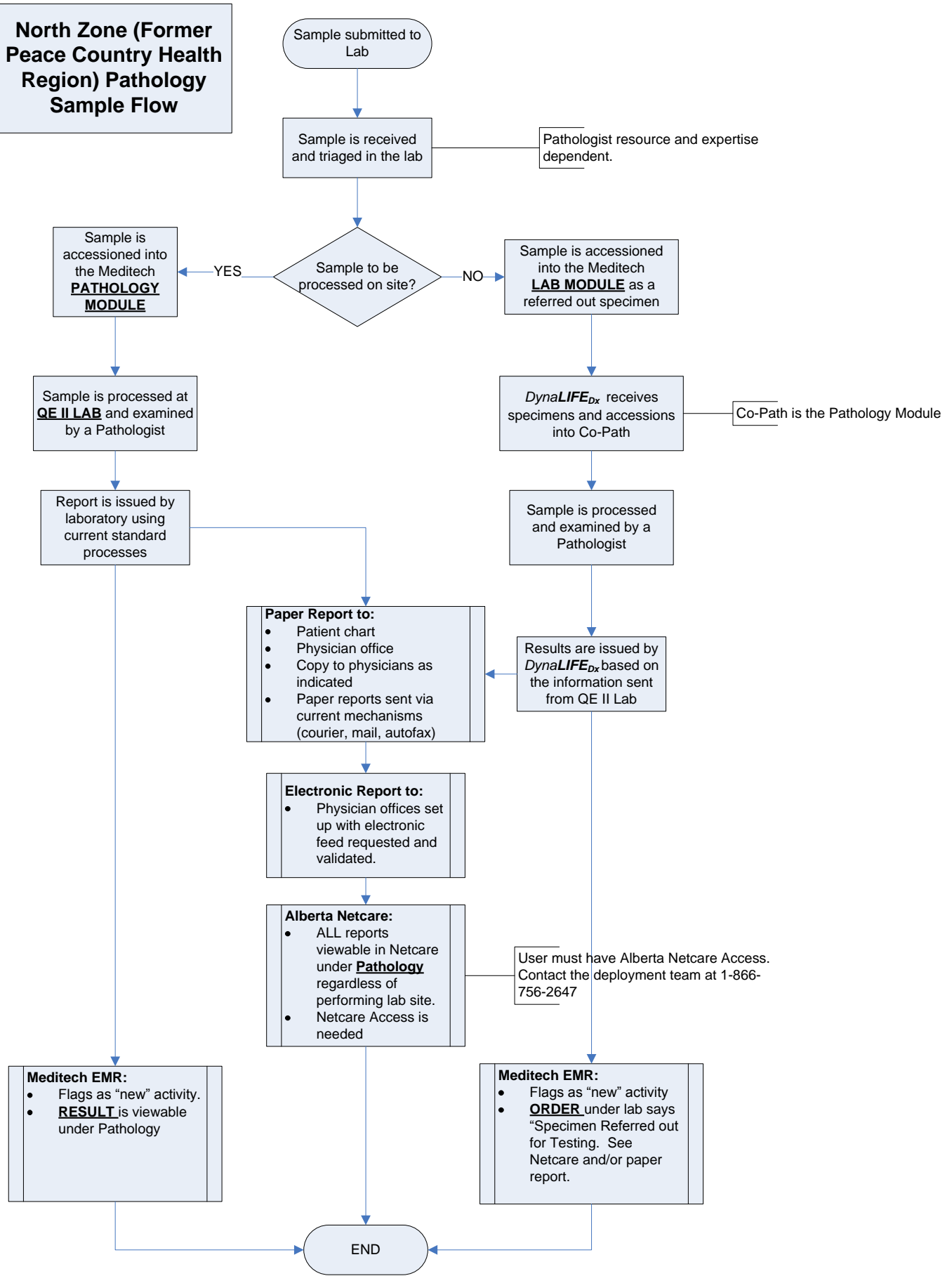


North Zone (Former Peace Country Health Region) Pathology Sample Flow



North Zone (Former Peace Country Health Region) Pathology Sample Flow

Sample submitted to Lab

Sample is received and triaged in the lab

Pathologist resource and expertise dependent.

Sample to be processed on site?

Sample is accessioned into the Meditech **PATHOLOGY MODULE**

Sample is accessioned into the Meditech **LAB MODULE** as a referred out specimen

Sample is processed at **QE II LAB** and examined by a Pathologist

*DynaLIFE*_{Dx} receives specimens and accessions into Co-Path

Co-Path is the Pathology Module

Report is issued by laboratory using current standard processes

Sample is processed and examined by a Pathologist

Paper Report to:

- Patient chart
- Physician office
- Copy to physicians as indicated
- Paper reports sent via current mechanisms (courier, mail, autofax)

Results are issued by *DynaLIFE*_{Dx} based on the information sent from QE II Lab

Electronic Report to:

- Physician offices set up with electronic feed requested and validated.

Alberta Netcare:

- ALL reports viewable in Netcare under **Pathology** regardless of performing lab site.
- Netcare Access is needed

User must have Alberta Netcare Access. Contact the deployment team at 1-866-756-2647

Meditech EMR:

- Flags as "new" activity.
- **RESULT** is viewable under Pathology

Meditech EMR:

- Flags as "new" activity
- **ORDER** under lab says "Specimen Referred out for Testing. See Netcare and/or paper report."

END